



Underwater Pool LED Lighting

2026



Simply the brightest.

Villa Conti
Bali, Indonesia

The ASTEL LIGHTING brand name was launched in 2009 as the result of very well accepted underwater marine lighting products fitted in luxury yachts.

The METEOR series of the new and world's first compact ultra-thin LED underwater pool light with built-in driver is designed to use the latest LED lighting technology. The main feature is that METEOR lights can be installed on a flat surface without any surface preparation during construction. For other installations and replacements the special adapters are available. The multi-color versions of METEOR series allow changing the color of lighting manually or automatically through the complete rainbow spectrum.

The METEOR XP series of the new extremely powerful LED lights is basically designed for installation in large pools. The special designed niches allow standard installations in pools using different materials and finishes. All the models are designed with stainless-steel casings.

"We strive for technical perfection in all of our products, and the key directions of our company have always been innovation and distinctiveness. The wide range of our marine and architectural fittings are of the highest possible quality made from carefully selected components and professional solid materials."

Our Story



1991 WHEN IT ALL BEGAN

What began as years of curiosity and exploration in electronics led two brothers to start a business in a small room - launching our journey with CCTV video surveillance equipment, driven by passion and big ambitions.

2009 ASTEL LIGHTING

The Astel Lighting brand name was launched in 2009 as the result of very well accepted marine lighting products fitted in luxury yachts. With years of experience in producing high-performance in-hull luminaires, the company gained knowledge and expertise in creating high-quality waterproof luminaire designs in one of the most challenging environments – the sea.

2012 METEOR

The launch of METEOR series of compact ultra-thin LED underwater pool lights with built-in driver, presented at FORUM PISCINE 2012 Pool & Spa Expo and International Congress in Bologna, Italy.

2016 METEOR XP

Engineered for powerful underwater illumination, the METEOR XP delivers intense brightness at 10,000 and 15,000 lumens - ideal for public, sports, and large hotel pools. This high-performance lighting solution was introduced at the 2016 PISCINE GLOBAL EXHIBITION in Lyon, France.

2018 NEW MOUNTING SOLUTIONS FOR METEOR SERIES

Designed for seamless integration into concrete pool walls, the Concrete Pool Niche allows the METEOR light to align perfectly with ceramic tile finishes, ensuring a clean and flush installation.

2019 ASTEL LIGHTING IN LAS VEGAS

The spectacular illumination of KAOS pools at Palms, Las Vegas, Nevada. The integration of Astel Lighting underwater pool lights METEOR and METEOR XP series was made by National Technology Associates (NTA), as our official representative for the US market.

Timeline



2022

UL Certificate of Compliance

To ensure competence that Astel Lighting products conform to a set of recognized industry standards, we added a new certificate.

This milestone not only reinforces the quality of Astel Lighting solutions but also opens the door to new opportunities across the U.S. market.



2024

ASTEL USA

Our expansion into the United States marked the launch of Astel USA, accompanied by strategic partnerships with a wide network of representatives and exhibitions at Everything under the sun EXPO in Orlando, Florida and International Pool Spa Patio EXPO in Dallas, Florida.



2024

QUASAR

World's first underwater pool light made entirely of glass. Unveiled at the 2024 PISCINE GLOBAL EXHIBITION in Lyon, France.

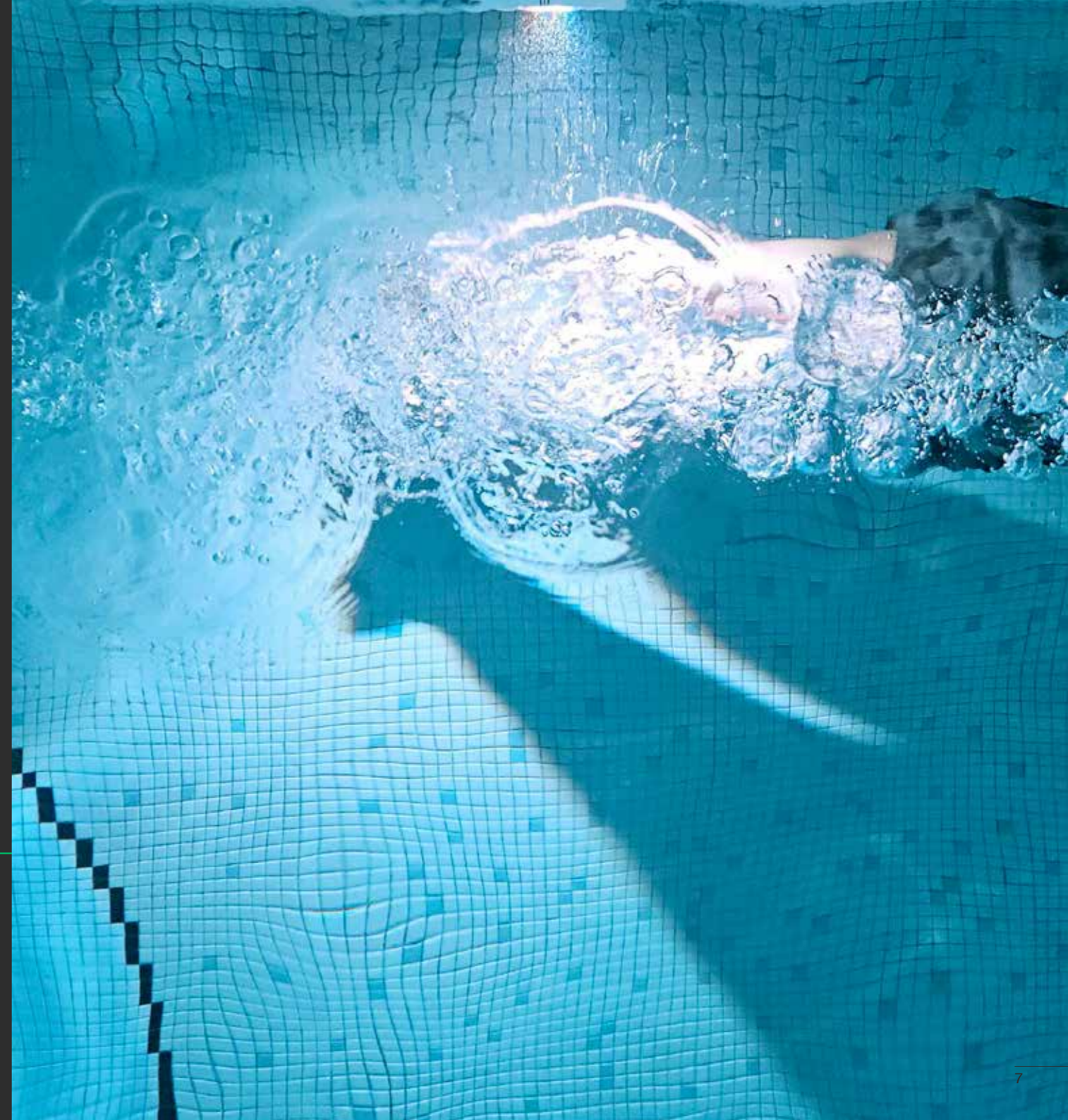


2025

cUL Certificate of Compliance

Our series of METEOR underwater LED lights is now officially cUL certified to UL 676 - Standard for Underwater Luminaires and Submersible Luminaires.

This certification reaffirms our commitment to engineering excellence and opens new opportunities for the METEOR series across Canada.





UNDERWATER POOL LED LIGHTS

QUASAR LSR12120	13
METEOR LSR0640	15
METEOR LSR0640N	15
METEOR LSR0640EQ	17
METEOR LSR1280	19
METEOR LSR1280N	19
METEOR LSR36240	21
METEOR LSR36500	23
METEOR XP LSR3210	25
METEOR XP LSR3215	25
Flood-Mount Accessory LSBXP32	

ACCESSORIES

PAR56 Adapter	29
Surface Mount Niche LSMN0640	31
Surface Mount Niche LSMN0640EQ	31
Surface Mount Niche LSMN1280	31
Surface Mount Niche LSMN36240	31
Surface Mount Niche LSMN36500	31
Surface Mount Right-Angle Niche LRMN0640	33
Surface Mount Right-Angle Niche LRMN1280	33
Surface Mount Right-Angle Niche LRMN36240	33
Surface Mount Right-Angle Niche LRMN36500	33
Surface-Mount Right-Angle Niche Accessory LSB0640	33

Surface-Mount Right-Angle Niche Accessory LSB1280	33
Surface-Mount Right-Angle Niche Accessory LSB36240	33
Surface-Mount Right-Angle Niche Accessory LSB36500	33
Weld Mount Niche LWMN0640	35
Weld Mount Niche LWMN1280	35
Weld Mount Niche LWMN36240	35
Weld Mount Niche LWMN36500	35
Concrete Pool Niche LCPN0640	37
Concrete Pool Niche LCPN1280	37
Concrete Pool Niche LCPN36240	37
Concrete Pool Niche LCFN0640	39
Concrete Pool Niche LCFN1280	39
Concrete Pool Niche LCFN36240	39
Concrete Pool Niche LCPN0640EQ	41
Liner Pool Niche LLPN0640	43
Liner Pool Niche LLPN1280	43
Liner Pool Niche LLPN36240	43
Liner Pool Niche LLPN36500	43
Liner / Stainless Steel Pool Niche Accessory LLS0640	43
Liner / Stainless Steel Pool Niche Accessory LLS1280	43
Liner / Stainless Steel Pool Niche Accessory LLS36240	43
Liner Pool Niche Accessory LLR0640	43
Liner Pool Niche Accessory LLR1280	43
Liner Pool Niche Accessory LLR36240	43
Liner Pool Niche Accessory LLR36500	43
Gasket LSG0640	45
Gasket LSG1280	45

Gasket LSG36240	45
O-Ring Set LSO0640	45
O-Ring Set LSO1280	45
O-Ring Set LSO36240	45
Inlet Fitting Adapter LIFA0640	47
Inlet Fitting Adapter LIFA1280	47
Inlet Fitting Adapter LIFA36240	47
Flush Fitting Adapter LFFA0640	49
Flush Fitting Adapter LFFA1280	49
Flush Fitting Adapter LFFA36240	49
Flush Fitting Adapter LFFA12120	49
Basic Instalation Adapter LQBA12120	51
Large Niche Adapter LLNA0640	53
Large Niche Adapter LLNA1280	53
Large Niche Adapter LLNA36240	53
Small Niche Adapter LSNA0640	55
Small Niche Adapter LSNA1280	55
Small Niche Adapter LSNA36240	55
Concrete Pool Niche LCPNXP32	57
Liner Pool Niche LLPNXP32	59
Liner Pool Niche LLGNXP32	61
Synchronization Unit LSU08	63
PWM Dimmer LDU13	63
DMX512 Interface LXU01	65
Converter Interface LCI41	65

Due to continuous product improvement all specifications and design are subject to change without notice.

Table Of Contents



M Villa Comporta Retreat
Portugal, Europe

QUASAR
QUASAR LSR12120

METEOR
METEOR LSR0640
METEOR LSR0640N
METEOR LSR0640EQ
METEOR LSR1280
METEOR LSR1280N
METEOR LSR36240
METEOR LSR36500
METEOR XP LSR3210
METEOR XP LSR3215

Underwater Pool LED Lights

QUASAR

The QUASAR, a compact surface-mount low-profile underwater pool LED light with built-in driver is designed to use the latest LED lighting technology with consideration of the maximum extent from sustainable materials. The casing is entirely made of thermally treated glass but at the same time is ensured to be easily installed without using of external metal parts. Beside the direct surface-mount installation the casing is easy adaptable for installation to different adapters for flush-mount installations and different pool finishes. The design ensures excellent waterproofing as well as optimal lighting properties. The single-color or multi-color versions allow changing the color of lighting through the complete color spectrum by using of optional DMX512 controllers and simple control of complete group of lights with dimming.

Features

- Innovative Design
- Low-Profile Thermal-Threated Glass Casing
- 12 Power LEDs Design
- Cool White, Warm White, Blue, Green or Multi-Color RGB / WGB / RGBW Lighting
- Vacuum Metalized Reflector
- Remote Control
- Digital Dimming
- Built-in ASTEL Protocol for DMX512 Control of Multi-Color versions
- Polarity Protection
- Transient Protection
- Thermal Protection
- Wide Range Power Supply
- Low Power Consumption
- Simple Installation



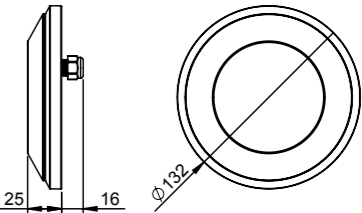
Private Pool
Slovenia, Europe

Simply
the brightest.



QUASAR LSR12120

Power supply	12–24 Vdc, max. 1.2 A/12 Vdc or 550 mA/24 Vdc
Lens angle	60° (standard) or 100° (wide)
Luminous flux	max. 1.900 lm (cool white)
ASTEL protocol default address	1
Operating temperature	-10°C - +50°C
Casing	Thermally-treated glass
Protection	IP 68
Dimensions	Ø 132 x 25 mm
Weight	0.7 kg



Color of lighting

W	cool white
WW	warm white
B	blue
G	green
M	RGB multi-color
WM	WGB multi-color
MW	RGBW multi-color

Beam angle

–	standard
D	wide

METEOR

Ultra-thin compact surface-mount design.
Single-color light control by using optional momentary switch or optional DMX512 interface LXU01 and PWM dimmer LDU13 with built-in ASTEL protocol.
Multi-color light control with dimming and changing of color of lighting manually or automatically through the complete rainbow spectrum by using optional momentary switch or optional DMX512 interface LXU01 with built-in ASTEL protocol.

Features

- Stainless Steel Casing
- 6 Power LEDs Design
- Cool White, Warm White, Blue, Green, Red and Multi-Color Lighting
- High Grade Polycarbonate Glass Optical Window
- Vacuum Metalized Reflector
- Remote Control
- Microprocessor Control (network)
- Digital Dimming
- Polarity Protection
- Transient Protection
- Thermal Protection
- Low Power Consumption
- Simple Installation

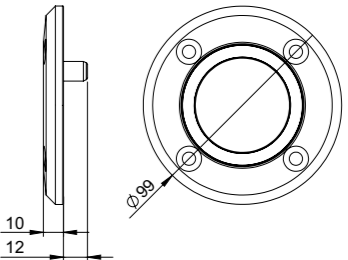


Simply
the brightest.



METEOR LSR0640

Power supply	12–24 Vdc, max. 800 mA/12 Vdc or 410 mA/24 Vdc
Beam angle	60° (standard) or 100° (wide)
Optical window	High-grade polycarbonate glass
Luminous flux	max. 950 lm (cool white)
Operating temperature	-10°C - +50°C
Casing	Stainless-steel (SAE316L)
Protection	IP 68
Dimensions	Ø 99 x 10 mm
Weight	0.4 kg



Installation

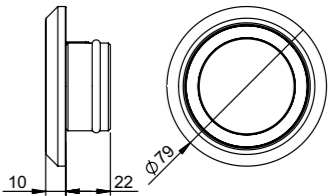
U	adapted for installation with Flush Fitting Adapter LFFA0640
-	other installations



METEOR LSR0640N

For flush-mount installation into the standard wall inlet.

Power supply	12–24 Vdc, max. 800 mA/12 Vdc or 410 mA/24 Vdc
Lens angle	60° (standard) or 100° (wide)
Optical window	High-grade polycarbonate glass
Luminous flux	max. 950 lm (cool white)
Operating temperature	-10°C - +50°C
Casing	Stainless steel (316L)
Protection	IP 68
Dimensions	Ø 79 x 10 mm
Weight	0.3 kg



Color of lighting

W	cool white
WW	warm white
B	blue
G	green
M	RGB multi-color
WM	WGB multi-color
MW	RGBW multi-color

Beam angle

-	standard
D	wide

METEOR

Ultra-thin compact surface-mount design.
Single-color light control by using optional momentary switch or optional DMX512 interface LXU01 and PWM dimmer LDU13 with built-in ASTEL protocol.
Multi-color light control with dimming and changing of color of lighting manually or automatically through the complete rainbow spectrum by using optional momentary switch or optional DMX512 interface LXU01 with built-in ASTEL protocol.

Features

- Stainless Steel Casing
- 6 Power LEDs Design
- Cool White, Warm White, Blue, Green, Red and Multi-Color Lighting
- High Grade Polycarbonate Glass Optical Window
- Vacuum Metalized Reflector
- Remote Control
- Microprocessor Control (network)
- Digital Dimming
- Polarity Protection
- Transient Protection
- Thermal Protection
- Low Power Consumption
- Simple Installation



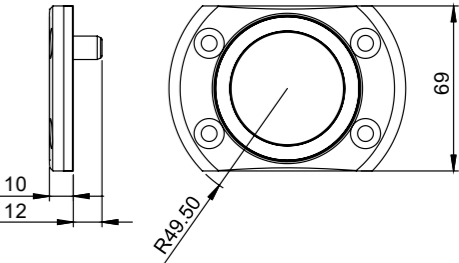
M Villa Comporta Retreat
Portugal, Europe

Simply
the brightest.



METEOR LSR0640EQ

Power supply	12–24 Vdc, max. 800 mA/12 Vdc or 410 mA/24 Vdc
Lens angle	60° (standard) or 100° (wide)
Optical window	High-grade polycarbonate glass
Luminous flux	max. 950 lm (cool white)
Operating temperature	-10°C - + 50°C
Casing	Stainless steel (316L)
Protection	IP 68
Dimensions	99 x 69 x 10 mm
Weight	0.3 kg



Color of lighting

W	cool white
WW	warm white
B	blue
G	green
M	RGB multi-color
WM	WGB multi-color
MW	RGBW multi-color

Beam angle

–	standard
D	wide

Installation

U	adapted for installation with Flush Fitting Adapter LFFA0640
-	other installations

METEOR

Ultra-thin compact surface-mount design.
Single-color light control by using optional momentary switch or optional DMX512 interface LXU01 and PWM dimmer LDU13 with built-in ASTEL protocol.
Multi-color light control with dimming and changing of color of lighting manually or automatically through the complete rainbow spectrum by using optional momentary switch or optional DMX512 interface LXU01 with built-in ASTEL protocol.

Features

- Stainless-Steel Casing
- 12 Power LEDs Design
- Cool White, Warm White, Blue, Green and Multi-Color Lighting
- High Grade Polycarbonate Glass Optical Window
- Vacuum Metalized Reflector
- Remote Control
- Microprocessor Control (network)
- Digital Dimming
- Polarity Protection
- Transient Protection
- Thermal Protection
- Low Power Consumption
- Simple Installation



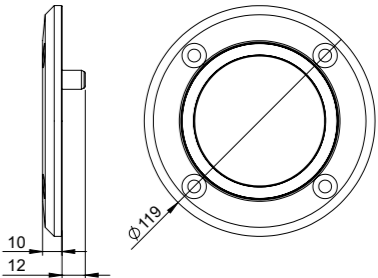
Blue Pearls Luxury Suites
Kos Island, Greece, Europe

Simply
the brightest.



METEOR LSR1280

Power supply	12–24 Vdc, max. 1.8 A/12 Vdc or 900 mA/24 Vdc
Beam angle	60°(standard) or 100°(wide)
Optical window	High-grade polycarbonate glass
Luminous flux	max. 1.900 lm (cool white)
Operating temperature	-10°C - +50°C
Casing	Stainless-steel (SAE316L)
Protection	IP 68
Dimensions	Ø 119 x 10 mm
Weight	0.6 kg



Installation

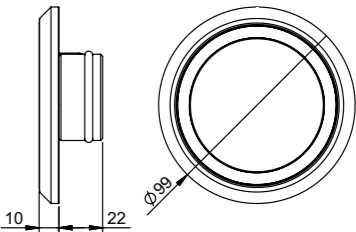
U	adapted for installation with Flush Fitting Adapter LFFA1280
-	other installations



METEOR LSR1280N

For flush-mount installation into the standard wall inlet.

Power supply	12–24 Vdc, max. 1.8 A/12 Vdc or 900 mA/24 Vdc
Beam angle	60°(standard) or 100°(wide)
Optical window	High-grade polycarbonate glass
Luminous flux	max. 1.900 lm (cool white)
Operating temperature	-10°C - +50°C
Casing	Stainless-steel (SAE316L)
Protection	IP 68
Dimensions	Ø 99 x 10 mm
Weight	0.4 kg



Color of lighting

W	cool white
WW	warm white
B	blue
G	green
M	RGB multi-color
WM	WGB multi-color
MW	RGBW multi-color

Beam angle

-	standard
D	wide

METEOR

Ultra-thin compact surface-mount design.
Single-color light control by using optional momentary switch or optional DMX512 interface LXU01 and PWM dimmer LDU13 with built-in ASTEL protocol.
Multi-color light control with dimming and changing of color of lighting manually or automatically through the complete rainbow spectrum by using optional momentary switch or optional DMX512 interface LXU01 with built-in ASTEL protocol.

Features

- Stainless-Steel Casing
- 36 Power LEDs Design
- Cool White, Warm White, Blue, Green and Multi-Color Lighting
- High Grade Polycarbonate Glass Optical Window
- Vacuum Metalized Reflector
- Remote Control
- Microprocessor Control (network)
- Digital Dimming
- Polarity Protection
- Transient Protection
- Thermal Protection
- Low Power Consumption
- Simple Installation



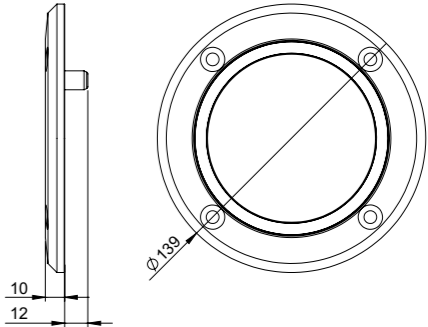
Cypress Harbour
Orlando, Florida, USA

Simply
the brightest.



METEOR LSR36240

Power supply	12–24 Vdc, max. 4.3 A/12 Vdc or 2 A/24 Vdc
Beam angle	60°(standard) or 100°(wide)
Optical window	High-grade polycarbonate glass
Luminous flux	max. 5.700 lm (cool white)
Operating temperature	-10°C - +50°C
Casing	Stainless-steel (SAE316L)
Protection	IP 68
Dimensions	Ø 139 x 10 mm
Weight	0.8 kg



Color of lighting

W	cool white
WW	warm white
B	blue
G	green
M	RGB multi-color
WM	WGB multi-color
MW	RGBW multi-color

Beam angle

–	standard
D	wide

Installation

U	adapted for installation with Flush Fitting Adapter LFFA36240
-	other installations

METEOR

Ultra-thin compact surface-mount design.
Single-color light control by using optional momentary switch or optional DMX512 interface LXU01 and PWM dimmer LDU13 with built-in ASTEL protocol.
Multi-color light control with dimming and changing of color of lighting manually or automatically through the complete rainbow spectrum by using optional momentary switch or optional DMX512 interface LXU01 with built-in ASTEL protocol.

Features

- Stainless-Steel Casing
- 36 Power LEDs Design
- Cool White, Warm White, Blue, Green and Multi-Color Lighting
- High Grade Polycarbonate Glass Optical Window
- Vacuum Metalized Reflector
- Remote Control
- Microprocessor Control (network)
- Digital Dimming
- Polarity Protection
- Transient Protection
- Thermal Protection
- Low Power Consumption
- Simple Installation

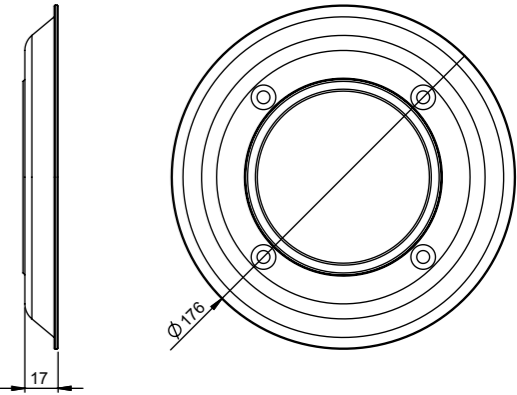
RGB MULTI-COLOR **WGB** MULTI-COLOR **RGBW** MULTI-COLOR



Palms Casino Resort
Las Vegas, Nevada, USA

METEOR LSR36500

Power supply	24 Vdc, max. 3.4 A
Beam angle	60°(standard) or 100°(wide)
Optical window	High-grade polycarbonate glass
Luminous flux	max. 8.300 lm (cool white)
Operating temperature	-10°C - +50°C
Casing	Stainless-steel (SAE316L)
Protection	IP 68
Dimensions	Ø 176 x 17 mm
Weight	2.3 kg



Color of lighting

W	cool white
WW	warm white
B	blue
G	green
M	RGB multi-color
WM	WGB multi-color
MW	RGBW multi-color

Beam angle

—	standard
D	wide

Simply
the brightest.

METEOR

Modern compact flush-mount design. Single-color or Multi-color light control with dimming and changing of color of lighting manually or automatically through the complete rainbow spectrum by using optional momentary switch or optional DMX512 interface LXU01 with built-in ASTEL protocol.

Features

- Stainless-Steel Casing
- 32 Power LEDs Design
- Cool White, Warm White, Blue, Green, Red, Multi-Color Lighting
- Tempered Glass Optical Window
- High-Efficiency Lens
- Remote Control
- Microprocessor Control (network)
- Digital Dimming
- Polarity Protection
- Transient Protection
- Thermal Protection
- Low Power Consumption
- Simple Installation



Palms Casino Resort
Las Vegas, Nevada, USA

Simply
the brightest.



METEOR XP LFR3210

Power supply	12–24 Vdc, max. 10.6 A/12 Vdc or 4.8 A/24 Vdc
Beam angle	31°(standard), 85°(wide), 11°(narrow)
Optical window	Tempered glass 8 mm
Luminous flux	max. 10.000 lm (cool white)
Operating temperature	-10°C - +50°C
Casing	Stainless-steel (316L)
Protection	IP 68
Dimensions	Ø 240 x 220 x 64 mm
Weight	4.3 kg

METEOR XP LFR3215

Power supply	12–24 Vdc, max. 10.6 A/12 Vdc or 4.8 A/24 Vdc
Beam angle	28°(standard), 85°(wide), 21°(narrow)
Optical window	Tempered glass 8 mm
Luminous flux	max. 15.000 lm (cool white)
Operating temperature	-10°C - +50°C
Casing	Stainless-steel (316L)
Protection	IP 68
Dimensions	Ø 240 x 220 x 64 mm
Weight	4.3 kg

Color of lighting

METEOR XP LFR3210

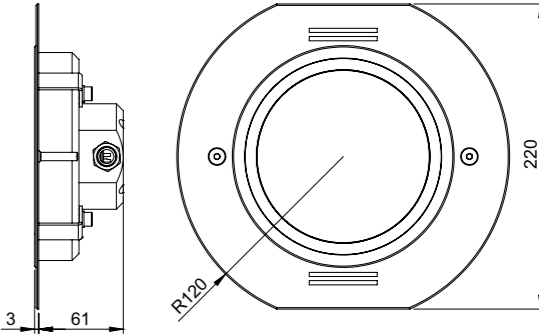
W	cool white
WW	warm white
B	blue
G	green
R	red
M	RGB multi-color
MW	RGBW multi-color

METEOR XP LFR3215

W	cool white
WW	warm white

Beam angle

–	standard
D	wide
N	narrow



LSBXP32

Flood-Mount Accessory LSBXP32

For METEOR XP series.

Material	Stainless steel (SAE316L)
Dimensions	141 x 112 x 150 mm
Weight	0.6 kg



M Villa Comporta Retreat
Portugal, Europe

PAR56 Adapter

PAR56 Adapter LPAR56

Surface Mount Niche

Surface Mount Niche LSMN064
Surface Mount Niche LSMN0640EQ
Surface Mount Niche LSMN1280
Surface Mount Niche LSMN36240
Surface Mount Niche LSMN36500

Surface Mount Right-Angle Niche

Surface Mount Right-Angle Niche LRMN0640
Surface Mount Right-Angle Niche LRMN1280
Surface Mount Right-Angle Niche LRMN36240
Surface Mount Right-Angle Niche LRMN36500
Surface-Mount Right-Angle Niche Accessory LSB0640
Surface-Mount Right-Angle Niche Accessory LSB1280
Surface-Mount Right-Angle Niche Accessory LSB36240
Surface-Mount Right-Angle Niche Accessory LSB36500

Weld Mount Niche

Weld Mount Niche LWMN0640
Weld Mount Niche LWMN1280
Weld Mount Niche LWMN36240
Weld Mount Niche LWMN36500

Concrete Pool Niche

Concrete Pool Niche LCPN0640
Concrete Pool Niche LCPN1280
Concrete Pool Niche LCPN36240
Concrete Pool Niche LCFN0640

Concrete Pool Niche LCFN1280
Concrete Pool Niche LCFN36240
Concrete Pool Niche LCPN0640EQ

Liner Pool Niche

Liner Pool Niche LLPN0640
Liner Pool Niche LLPN1280
Liner Pool Niche LLPN36240
Liner Pool Niche LLPN36500
Liner / Stainless Steel Pool Niche Accessory LLS0640
Liner / Stainless Steel Pool Niche Accessory LLS1280
Liner / Stainless Steel Pool Niche Accessory LLS36240
Liner Pool Niche Accessory LLR0640
Liner Pool Niche Accessory LLR1280
Liner Pool Niche Accessory LLR36240
Liner Pool Niche Accessory LLR36500

Gasket

Gasket LSG0640
Gasket LSG1280
Gasket LSG36240

O-Ring Set

O-Ring Set LSO0640
O-Ring Set LSO1280
O-Ring Set LSO36240

Inlet Fitting Adapter

Inlet Fitting Adapter LIFA0640
Inlet Fitting Adapter LIFA1280
Inlet Fitting Adapter LIFA36240

Flush Fitting Adapter

Flush Fitting Adapter LFFA0640
Flush Fitting Adapter LFFA1280
Flush Fitting Adapter LFFA36240
Flush Fitting Adapter LFFA12120

Basic Installation Adapter

Basic Installation Adapter LQBA12120

Large Niche Adapter

Large Niche Adapter LLNA0640
Large Niche Adapter LLNA1280
Large Niche Adapter LLNA36240

Small Niche Adapter

Small Niche Adapter LSNA0640
Small Niche Adapter LSNA1280
Small Niche Adapter LSNA36240

Concrete Pool Niche

Concrete Pool Niche LCPNXP32

Liner Pool Niche

Liner Pool Niche LLPNXP32
Liner Pool Niche LLGNXP32

Synchronization Unit LSU08

PWM Dimmer LDU13

DMX512 Interface LXU01

Converter Interface LCI41

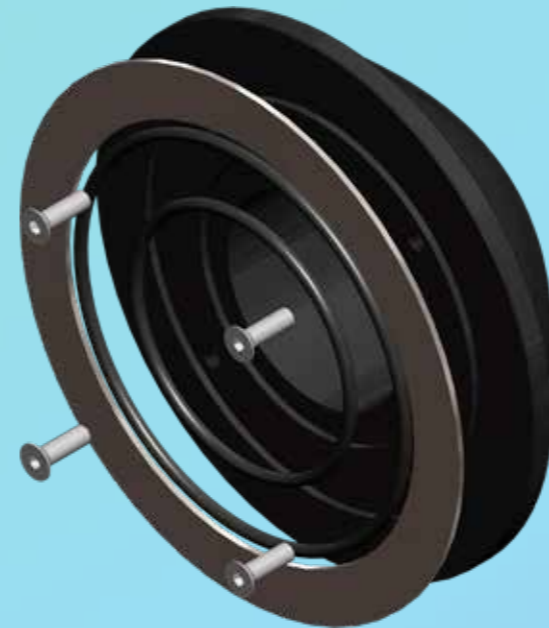
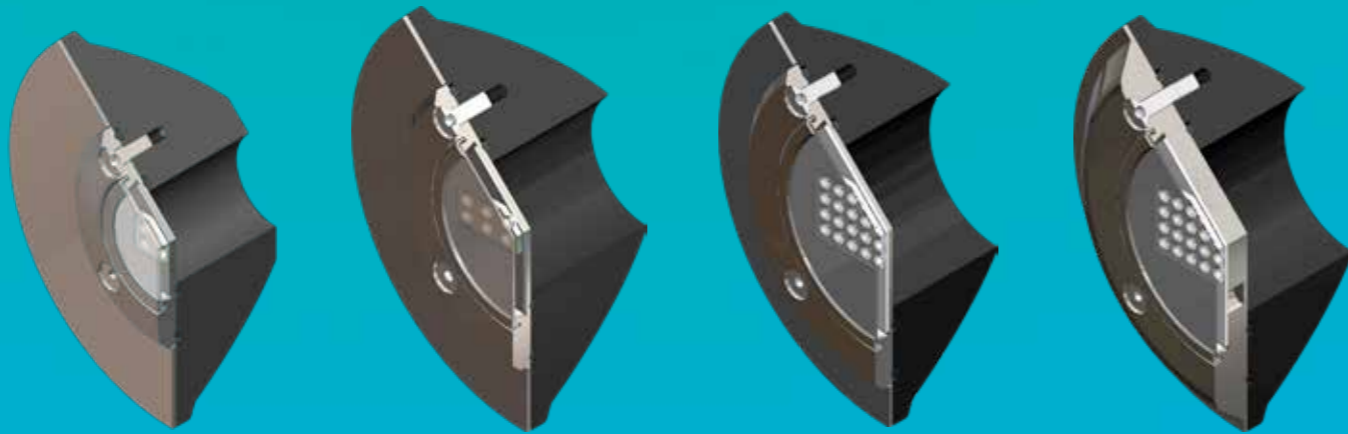
Accessories

PAR56 Adapter

Adapting of METEOR lights to different (existing) PAR56 niches.

Features

- For using with METEOR LSR0640, LSR1280, LSR36240 and LSR36500 series.
- Black UHMW-PE Body
- Stainless-Steel Screws and Flange
- Simple Installation

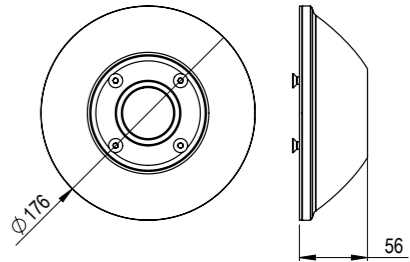


Mounting of METEOR LSR0640, LSR1280, LSR36240 and LSR36500 series to the standard PAR56 niche.

PAR56 Adapter LPAR560640

For METEOR LSR0640 series.

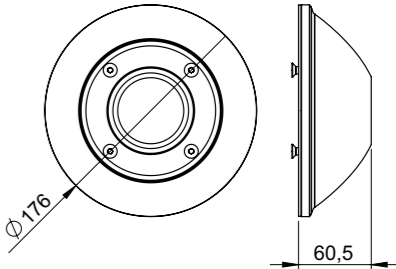
Material	UHMW-PE
Dimensions	Ø 176 x 56 mm
Weight	0.95 kg



PAR56 Adapter LPAR561280

For METEOR LSR1280 series.

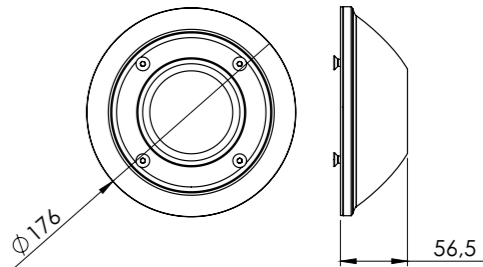
Material	UHMW-PE
Dimensions	Ø 176 x 60.5 mm
Weight	0.85 kg



PAR56 Adapter LPAR5636240

For METEOR LSR36240 and LSR36500 series.

Material	UHMW-PE
Dimensions	Ø 176 x 56.5 mm
Weight	0.75 kg

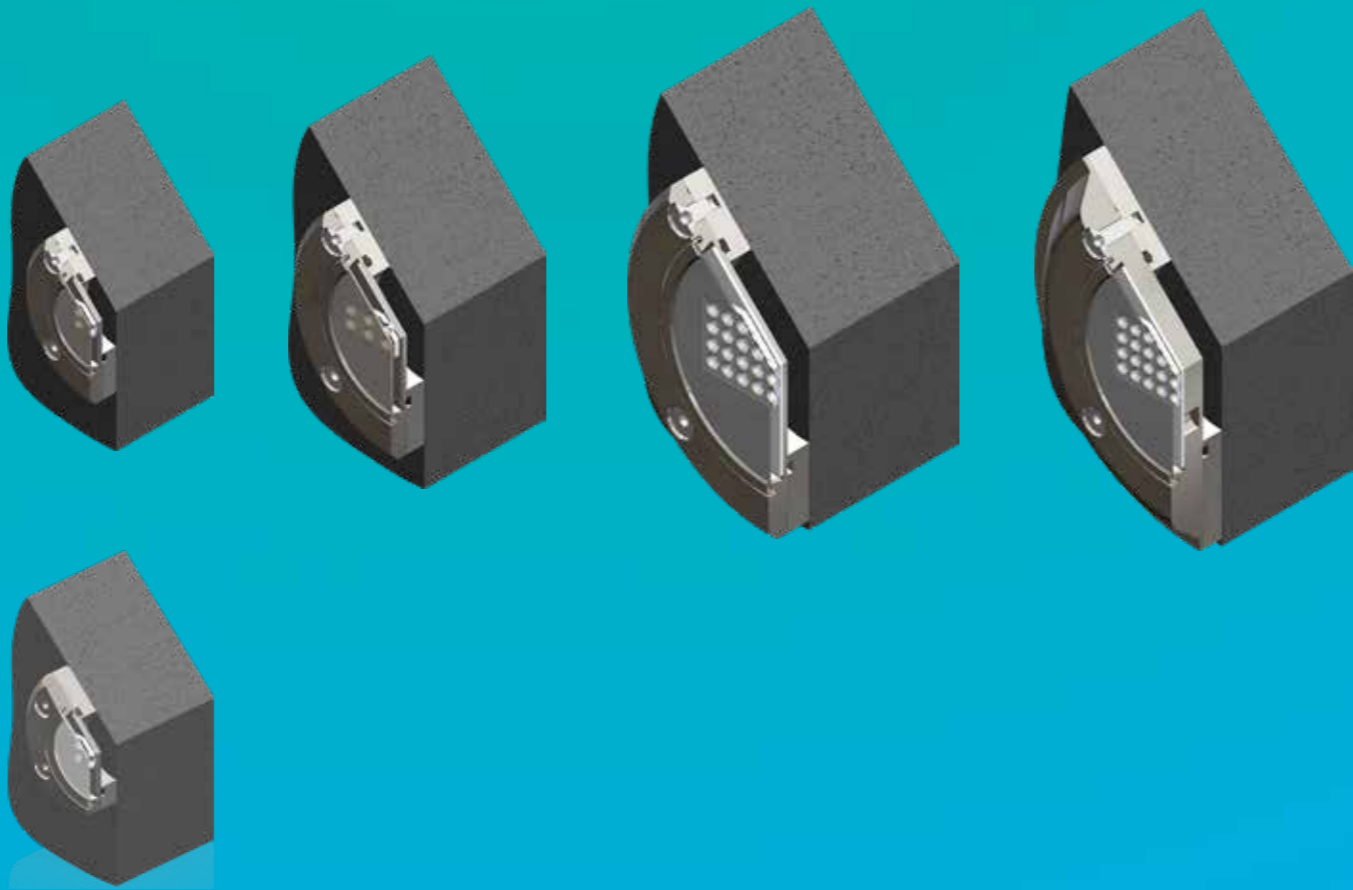


Surface Mount Niche

Surface-mount installation of METEOR lights.

Features

- For using with METEOR series
- Stainless-Steel body
- Stainless-Steel Screws
- Simple Installation

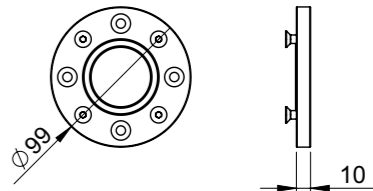


Surface-mount installation of METEOR series.

Surface Mount Niche LSMN0640

For METEOR LSR0640 series.

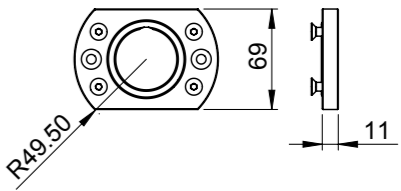
Material	Electropolished stainless steel (SAE316L)
Dimensions	Ø 99 x 10 mm
Weight	0.5 kg



Surface Mount Niche LSMN0640EQ

For METEOR LSR0640EQ series.

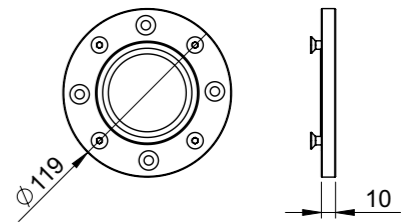
Material	Stainless steel (SAE316L)
Dimensions	99 x 69 x 10 mm
Weight	0.4 kg



Surface Mount Niche LSMN1280

For METEOR LSR1280 series.

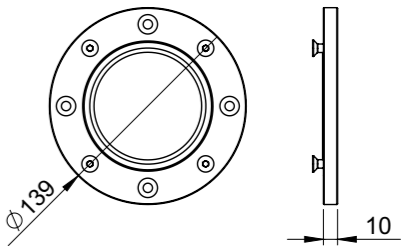
Material	Electropolished stainless steel (SAE316L)
Dimensions	Ø 119 x 10 mm
Weight	0.7 kg



Surface Mount Niche LSMN36240

For METEOR LSR36240 series.

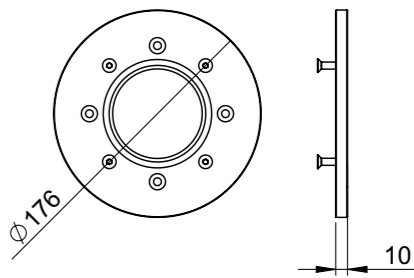
Material	Electropolished stainless steel (SAE316L)
Dimensions	Ø 139 x 10 mm
Weight	0.9 kg



Surface Mount Niche LSMN36500

For METEOR LSR36500 series.

Material	Electropolished stainless steel (SAE316L)
Dimensions	Ø 176 x 10 mm
Weight	1.7 kg



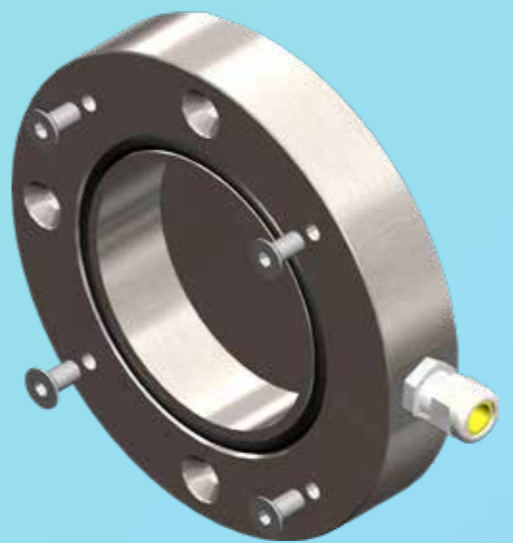
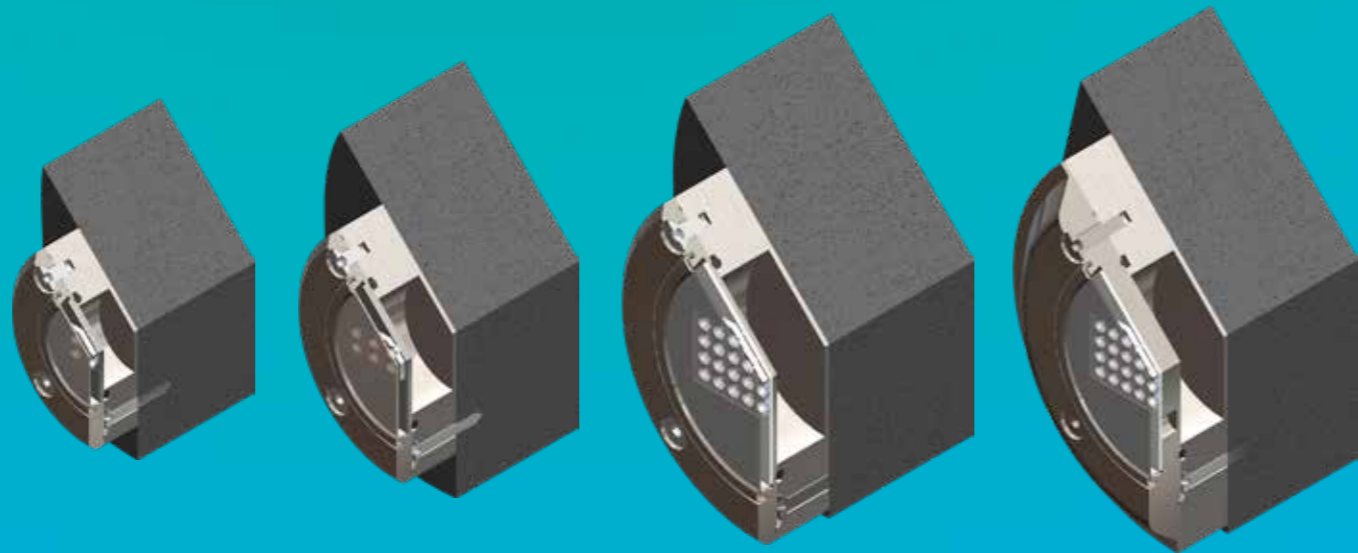
Surface-Mount Right-Angle Niche

Surface-mount right-angle cable installation of METEOR lights with lighting direction adjustment possibility.

Features

- For using with METEOR series
- Stainless-Steel body
- Stainless-Steel Screws
- PVDF Cable Gland
- Simple Installation

Surface-Mount Right-Angle Niche Accessory



LSB Accessory

Surface-mount right-angle cable installation of METEOR series.

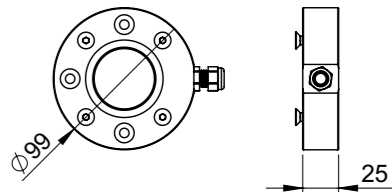
Surface-Mount Right-Angle Niche LRMN0640

For METEOR LSR0640 series.

Material	Electropolished stainless steel (SAE316L)
Dimensions	Ø 99 x 25 mm
Weight	1.3 kg

Surface-Mount Right-Angle Niche Accessory LSB0640

Material	Electropolished stainless steel (SAE316L)
Dimensions	107 x 100 x 20 mm
Weight	0.3 kg



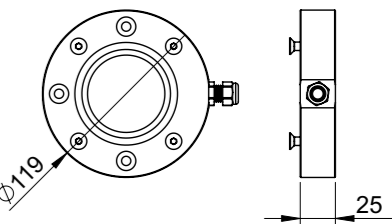
Surface-Mount Right-Angle Niche LRMN1280

For METEOR LSR1280 series.

Material	Electropolished stainless steel (SAE316L)
Dimensions	Ø 119 x 25 mm
Weight	1.8 kg

Surface-Mount Right-Angle Niche Accessory LSB1280

Material	Electropolished stainless steel (SAE316L)
Dimensions	117 x 120 x 20 mm
Weight	0.3 kg



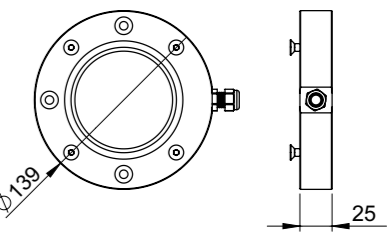
Surface-Mount Right-Angle Niche LRMN36240

For METEOR LSR36240 series.

Material	Electropolished stainless steel (SAE316L)
Dimensions	Ø 139 x 25 mm
Weight	2.2 kg

Surface-Mount Right-Angle Niche Accessory LSB36240

Material	Stainless-steel (SAE316L)
Dimensions	132 x 140 x 25 mm
Weight	0.4 kg



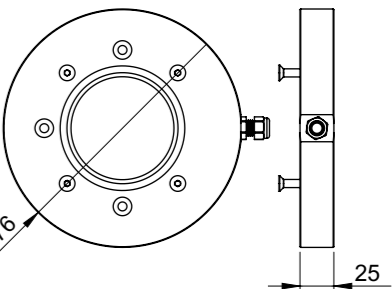
Surface-Mount Right-Angle Niche LRMN36500

For METEOR LSR36500 series.

Material	Electropolished stainless steel (SAE316L)
Dimensions	Ø 176 x 25 mm
Weight	4.0 kg

Surface-Mount Right-Angle Niche Accessory LSB36500

Material	Stainless-steel (SAE316L)
Dimensions	155 x 176 x 30 mm
Weight	0.5 kg

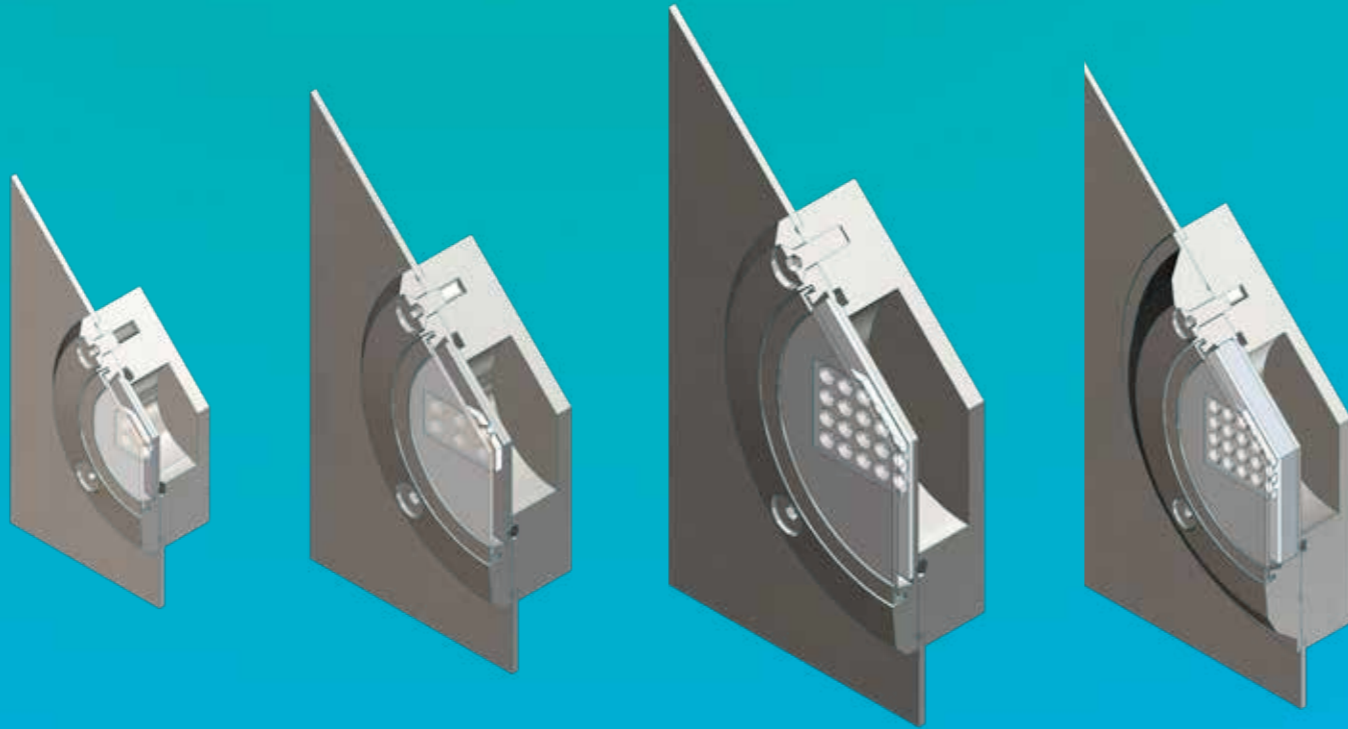


Weld Mount Niche

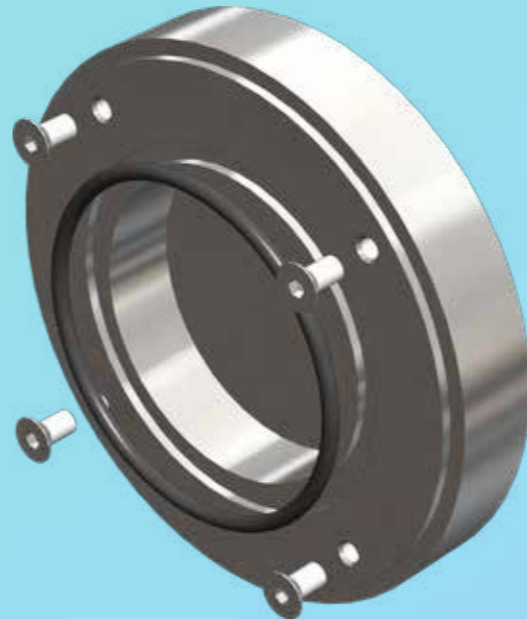
Weld-mount installation of METEOR series to stainless-steel pools.

Features

- For using with METEOR series
- Electropolished Stainless Steel Body
- Stainless-Steel Screws
- For Weld-mount Installation



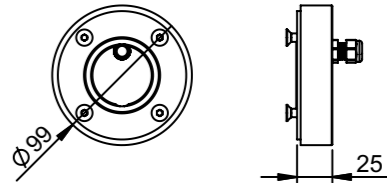
Installation of METEOR series to stainless-steel pools.



Weld Mount Niche LWMN0640

For METEOR LSR0640 series.

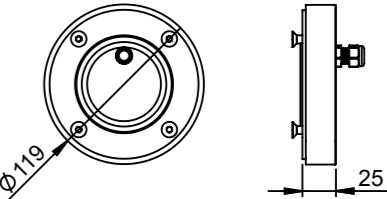
Material	Electropolished stainless steel (SAE316L)
Dimensions	Ø 99 x 25 mm
Weight	1.4 kg



Weld Mount Niche LWMN1280

For METEOR LSR1280 series.

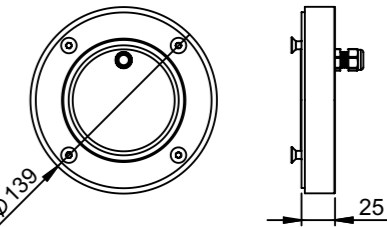
Material	Electropolished stainless steel (SAE316L)
Dimensions	Ø 119 x 25 mm
Weight	1.9 kg



Weld Mount Niche LWMN36240

For METEOR LSR36240 series.

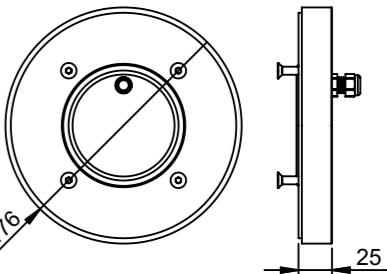
Material	Electropolished stainless steel (SAE316L)
Dimensions	Ø 139 x 25 mm
Weight	2.4 kg



Weld Mount Niche LWMN36500

For METEOR LSR36500 series.

Material	Electropolished stainless steel (SAE316L)
Dimensions	Ø 176 x 25 mm
Weight	4.2 kg

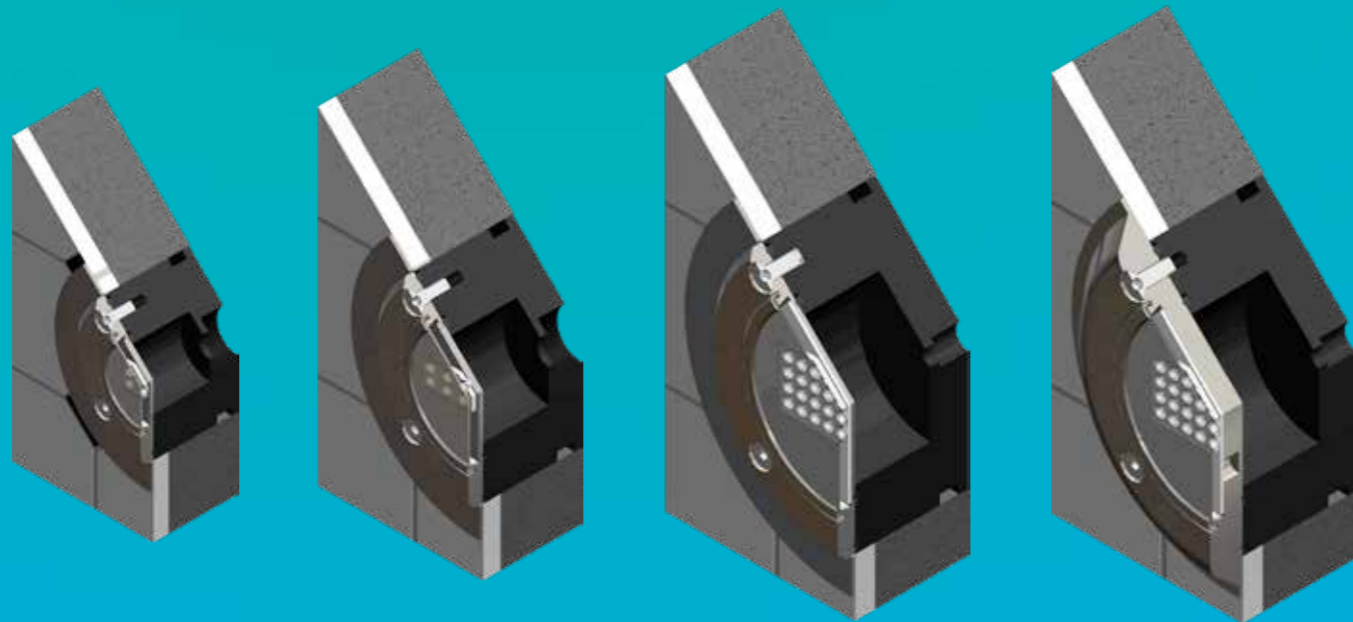


Concrete Pool Niche

Installation of METEOR lights to concrete pools with ceramic tile finish.

Features

- For using with METEOR series
- Black UHMW-PE Body
- Stainless-Steel Screws and Flange
- Simple Installation

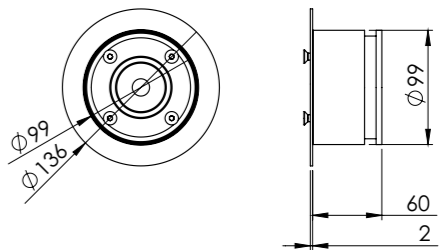


Installation of METEOR series to ceramic tile finish pools.

Concrete Pool Niche LCPN0640

For METEOR LSR0640 series.

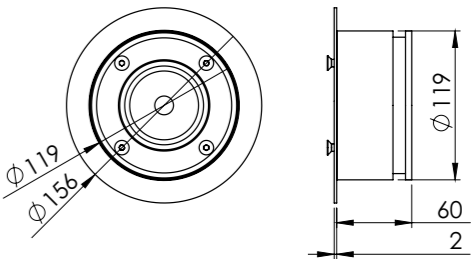
Material	UHMW-PE
Dimensions	Ø 99 x 60 mm
Weight	0.5 kg



Concrete Pool Niche LCPN1280

For METEOR LSR1280 series.

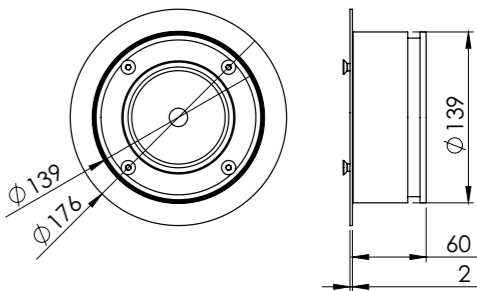
Material	UHMW-PE
Dimensions	Ø 119 x 60 mm
Weight	0.7 kg



Concrete Pool Niche LCPN36240

For METEOR LSR36240 and LSR36500 series.

Material	UHMW-PE
Dimensions	Ø 139 x 60 mm
Weight	0.9 kg

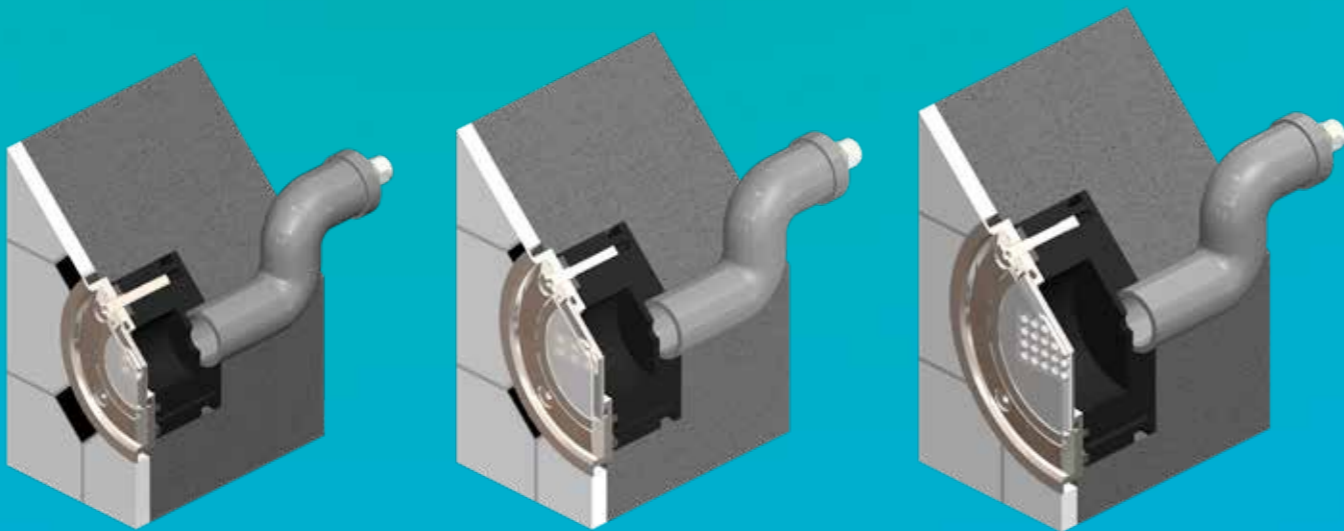


Concrete Pool Niche

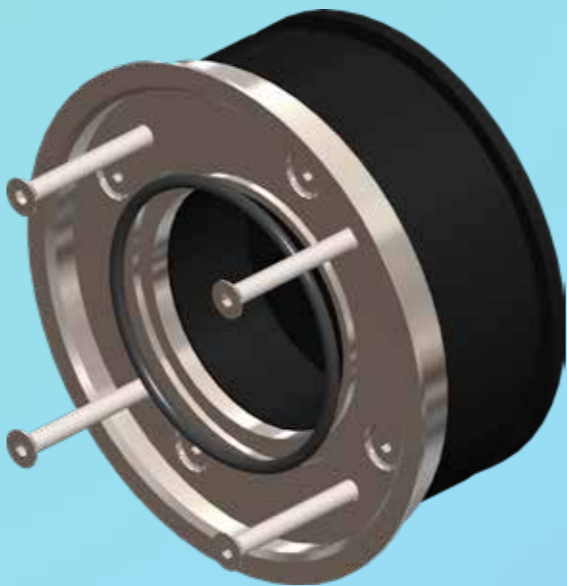
Installation of METEOR lights to concrete pools with ceramic tile finish aligned with wall surface.

Features

- For using with METEOR series
- Black UHMW-PE Body
- Electropolished Stainless Steel Flush-Mount Front Lid
- Stainless Steel Screws
- Simple Installation



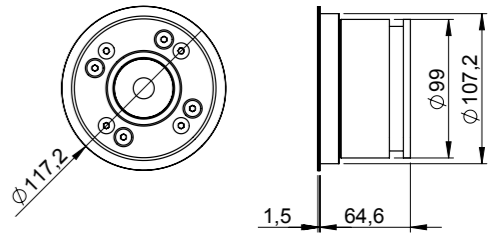
Installation of METEOR series to concrete pools with ceramic tile finish aligned with wall surface.



Concrete Pool Niche LCFN0640

For METEOR LSR0640 series.

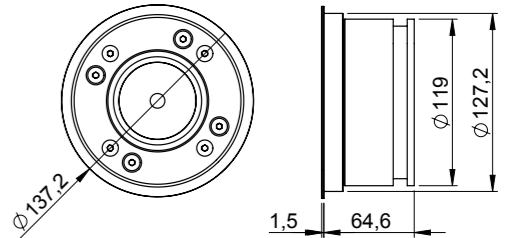
Material	UHMW-PE / Stainless steel (SAE316L)
Dimensions	Ø 117.2 x 66.1 mm
Weight	0.8 kg



Concrete Pool Niche LCFN1280

For METEOR LSR1280 series.

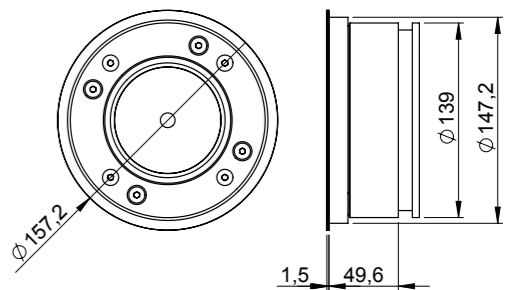
Material	UHMW-PE / Stainless steel (SAE316L)
Dimensions	Ø 137.2 x 66.1 mm
Weight	1.1 kg



Concrete Pool Niche LCFN36240

For METEOR LSR36240 series.

Material	UHMW-PE / Stainless steel (SAE316L)
Dimensions	Ø 157.2 x 66.1 mm
Weight	1.3 kg

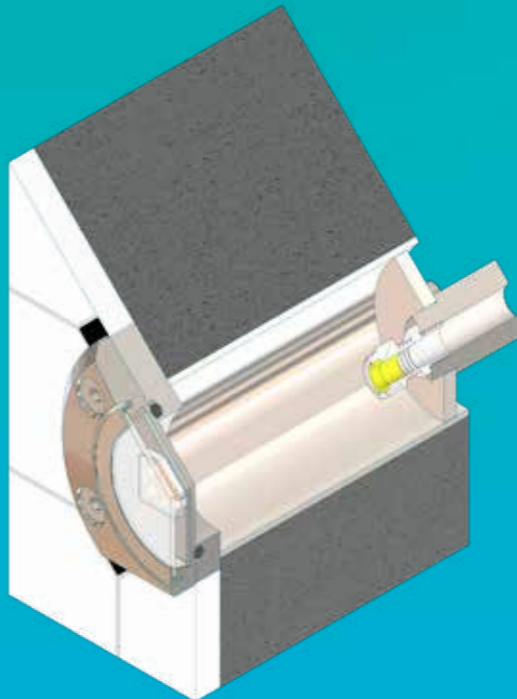


Concrete Pool Niche

Installation of METEOR EQ series to concrete pools with ceramic tiles finish.

Features

- For using with METEOR LSR0640EQ series
- Electropolished Stainless Steel Body
- Stainless-Steel Screws
- For Flush-mount Installation

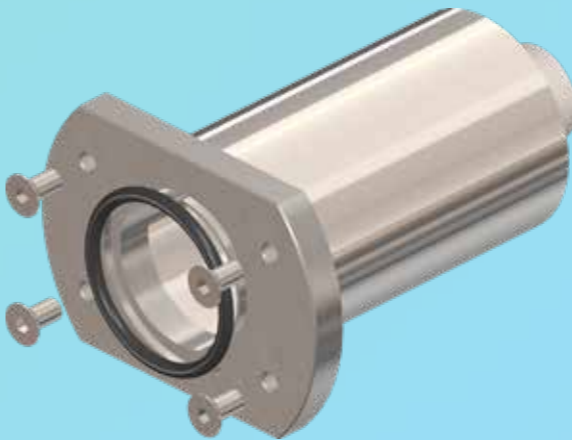
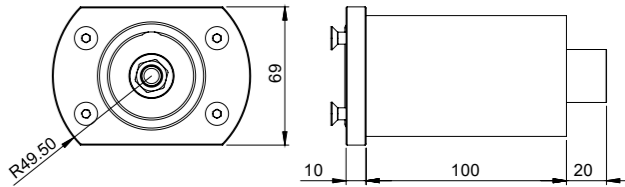


Installation of METEOR EQ series to concrete pools with ceramic tiles finish.

Concrete Pool Niche LCPN0640EQ

For METEOR LSR0640EQ series.

Material	Stainless steel (SAE316L)
Dimensions	99 x 69 x 130 mm
Weight	1 kg



Liner Pool Niche

Installation of METEOR lights to polyester or liner/ concrete pools.

Features

- For using with METEOR series
- Black UHMW-PE Body
- Stainless-Steel Screws and Flange
- Simple Installation

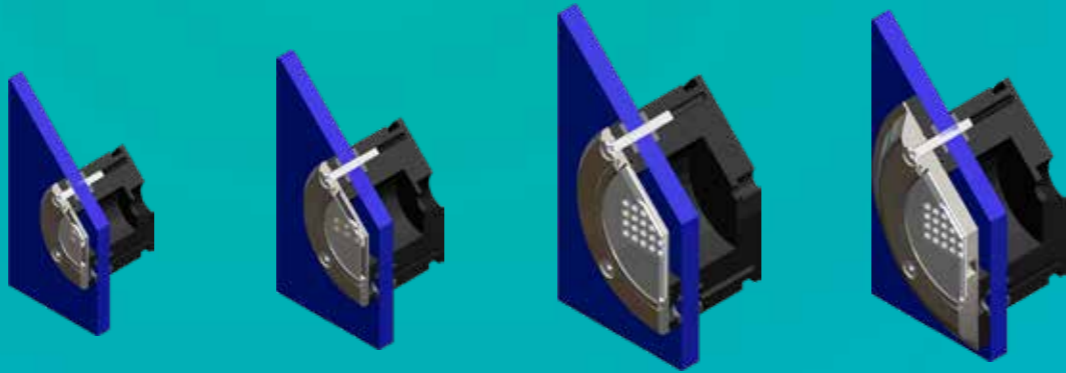
Liner / Stainless-Steel Pool Niche Accessory

Liner Pool Niche Accessory

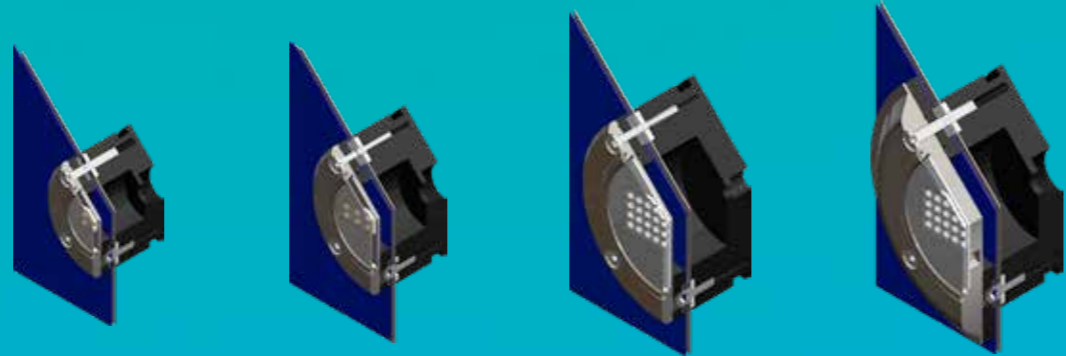
Accessories of LLPN niche series for installation of METEOR lights to liner and liner/stainless-steel pools.

Features

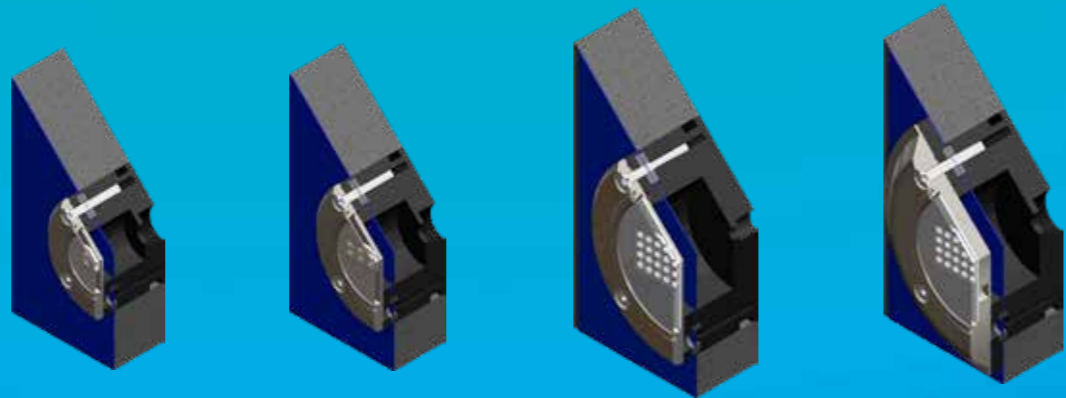
- For using with Liner Pool Niche LLPN series
- Elastomer and Electropolished Stainless-Steel Body
- Stainless-Steel Screws
- Simple Installation



Installation of METEOR series to polyester pools.



Installation of METEOR series to liner/stainless-steel pools.



Installation of METEOR series to liner/concrete pools.



LLS Accessory

LLR Accessory

Liner Pool Niche LLPN0640

For METEOR LSR0640 series.

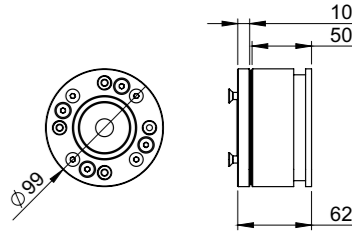
Material	UHMW-PE
Dimensions	Ø 99 x 60 mm
Weight	0.5 kg

Liner / Stainless-Steel Pool Niche Accessory LLS0640

Material	Elastomer NBR 65 Sh
Dimensions	Ø 99 x 4 mm
Weight	0.1 kg

Liner Pool Niche Accessory LLR0640

Material	Stainless-steel (SAE316L)
Dimensions	Ø 99 x 10 mm
Weight	0.6 kg



Liner Pool Niche LLPN1280

For METEOR LSR1280 series.

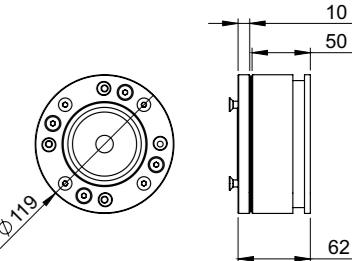
Material	UHMW-PE
Dimensions	Ø 119 x 60 mm
Weight	0.7 k

Liner / Stainless-Steel Pool Niche Accessory LLS1280

Material	Elastomer NBR 65 Sh
Dimensions	Ø 119 x 4 mm
Weight	0.1 kg

Liner Pool Niche Accessory LLR1280

Material	Stainless-steel (SAE316L)
Dimensions	Ø 119 x 10 mm
Weight	0.8 kg



Liner Pool Niche LLPN36240

For METEOR LSR36240 series.

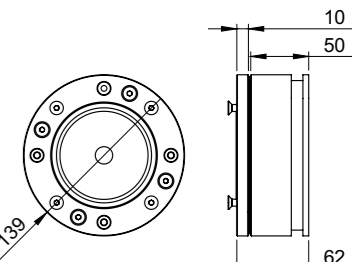
Material	UHMW-PE
Dimensions	Ø 139 x 60 mm
Weight	0.9 kg

Liner / Stainless-Steel Pool Niche Accessory LLS36240

Material	Elastomer NBR 65 Sh
Dimensions	Ø 139 x 4 mm
Weight	0.1 kg

Liner Pool Niche Accessory LLR36240

Material	Stainless-steel (SAE316L)
Dimensions	Ø 139 x 10 mm
Weight	1 kg



Liner Pool Niche LLPN36500

For METEOR LSR36500 series.

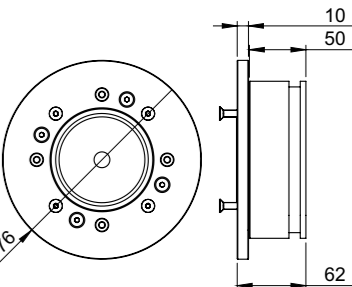
Material	UHMW-PE
Dimensions	Ø 176 x 60 mm
Weight	1.0 kg

Liner / Stainless-Steel Pool Niche Accessory LLS36240

Material	Elastomer NBR 65 Sh
Dimensions	Ø 139 x 4 mm
Weight	0.1 kg

Liner Pool Niche Accessory LLR36500

Material	Stainless-steel (SAE316L)
Dimensions	Ø 176 x 10 mm
Weight	1.6 kg



Gasket

O-Ring

Surface-mount installation of single-color or multi-color RGB lights.

Features

- For using with METEOR series
- Simple Installation



Gasket LSG0640

For METEOR LSR0640 series.

Material	Elastomer NBR 65 Sh
Dimensions	Ø 99 x 4 mm
Weight	0.1 kg

Gasket LSG1280

For METEOR LSR1280 series.

Material	Elastomer NBR 65 Sh
Dimensions	Ø 119 x 4 mm
Weight	0.1 kg

Gasket LSG36240

For METEOR LSR36240 and LSR36500 series.

Material	Elastomer NBR 65 Sh
Dimensions	Ø 139 x 4 mm
Weight	0.1 kg

O-Ring LSO0640

For METEOR LSR0640 series.

Material	Elastomer NBR 70
Dimensions	Ø 86 / Ø 44 mm
Weight	0.1 kg

O-Ring LSO1280

For METEOR LSR1280 series.

Material	Elastomer NBR 70
Dimensions	Ø 108 / Ø 63 mm
Weight	0.1 kg

O-Ring LSO36240

For METEOR LSR36240 and LSR36500 series.

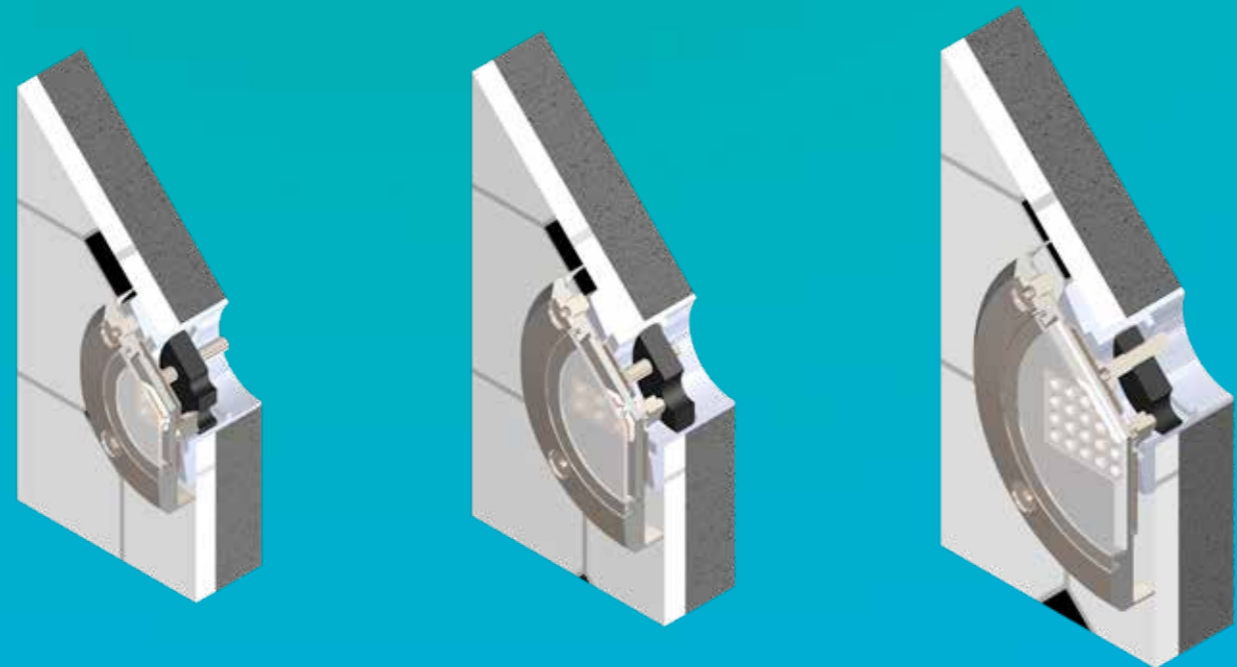
Material	Elastomer NBR 70
Dimensions	Ø 126 / Ø 82 mm
Weight	0.1 kg

Inlet Fitting Adapter

Installation of METEOR series into standard pool wall inlets.

Features

- For using with METEOR series
- Electropolished Stainless Steel Cover
- Black UHMW-PE Insert
- Stainless-Steel Screws
- Simple Installation

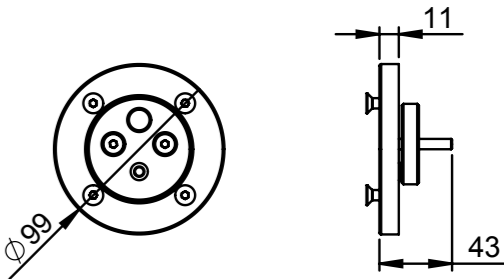


Installation of METEOR series to the pool wall inlets.

Inlet Fitting Adapter LIFA0640

For METEOR LSR0640 series.

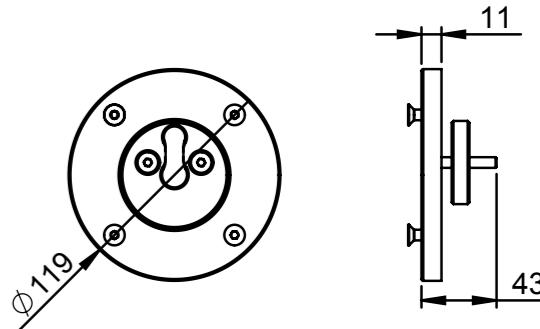
Material	UHMW-PE / Stainless steel (SAE316L)
Dimensions	Ø 99 x 43 mm
Weight	120 g



Inlet Fitting Adapter LIFA1280

For METEOR LSR1280 series.

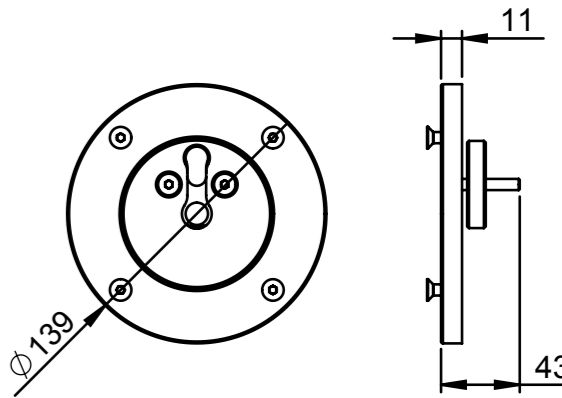
Material	UHMW-PE / Stainless steel (SAE316L)
Dimensions	Ø 119 x 43 mm
Weight	150 g



Inlet Fitting Adapter LIFA36240

For METEOR LSR36240 series.

Material	UHMW-PE / Stainless steel (SAE316L)
Dimensions	Ø 139 x 43 mm
Weight	185 g

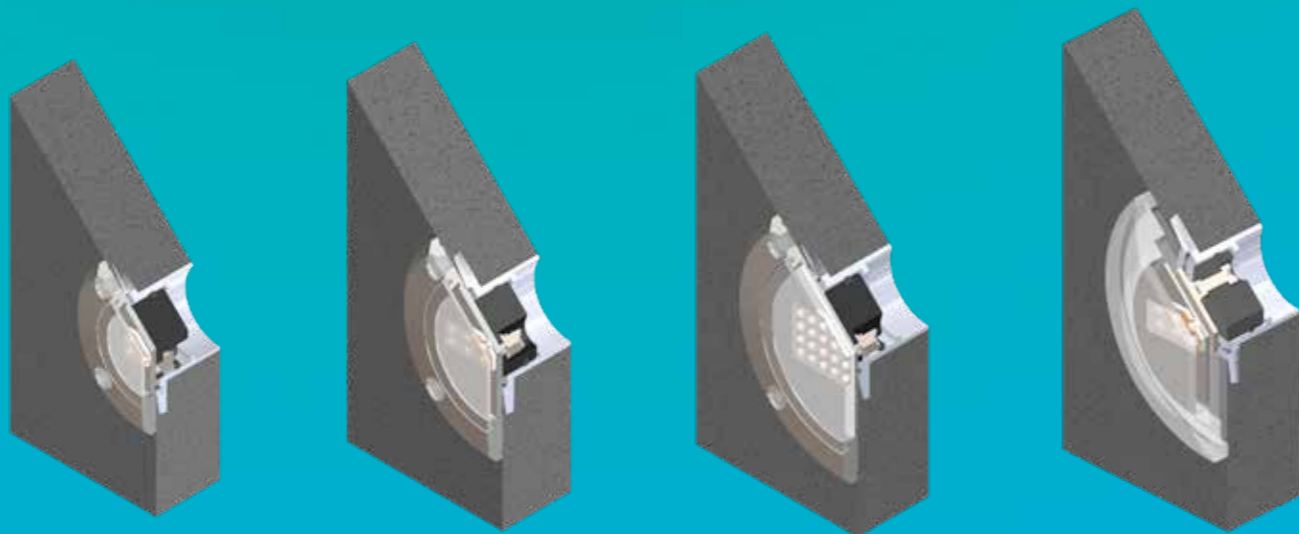


Flush Fitting Adapter

Installation of METEOR and QUASAR series into the standard pool wall inlets.

Features

- For using with METEOR and QUASAR series
- Black UHMW-PE Insert incl. O-ring
- Simple Installation



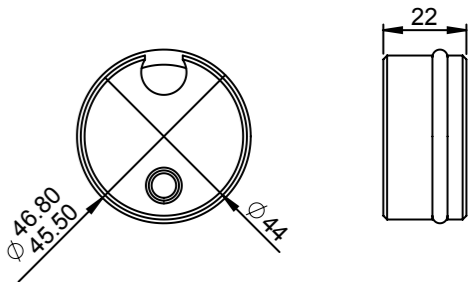
Installation of (adapted) METEOR and QUASAR series to the pool wall inlets.



Flush Fitting Adapter LFFA0640

For METEOR LSR0640 series.

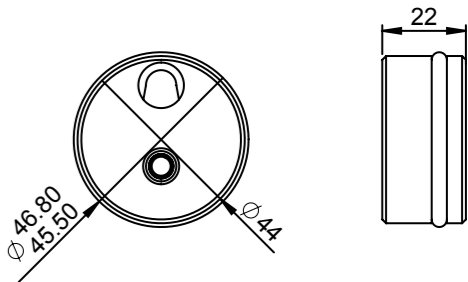
Material	UHMW-PE
Dimensions	Ø 46.8 x 22 mm
Weight	40 g



Flush Fitting Adapter LFFA1280

For METEOR LSR1280 series.

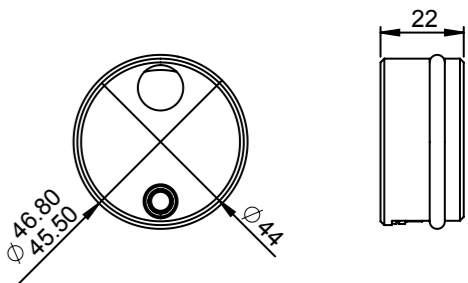
Material	UHMW-PE
Dimensions	Ø 46.8 x 22 mm
Weight	40 g



Flush Fitting Adapter LFFA36240

For METEOR LSR36240 series.

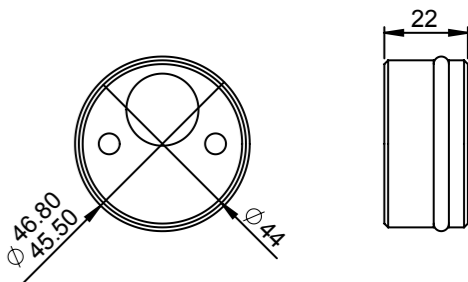
Material	UHMW-PE
Dimensions	Ø 46.8 x 22 mm
Weight	40 g



Flush Fitting Adapter LFFA12120

For QUASAR LSR12120 series.

Material	UHMW-PE
Dimensions	Ø 46.8 x 22 mm
Weight	40 g

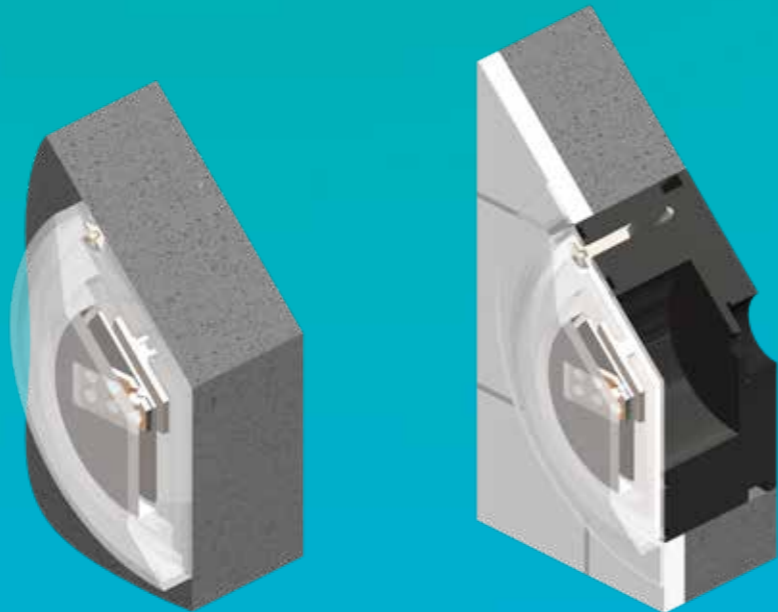


Basic Installation Adapter

Installation of QUASAR series by using the niches 36240 series and for surface-mount installation.

Features

- For using with QUASAR 12120 series
- Translucent Silicone Body
- PC Fixing Plate
- Plastic Screws

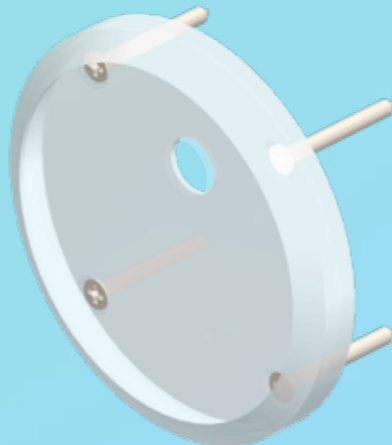
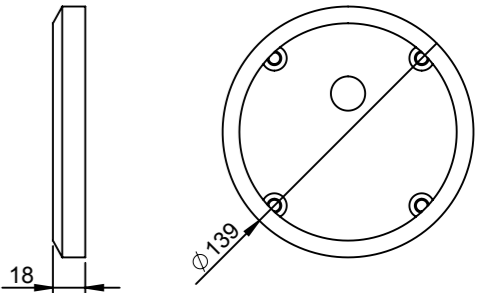


Installation of QUASAR series to the pool wall or niches.

Basic Installation Adapter LQBA12120

For QUASAR LSR12120 series.

Material	Translucent silicone
Dimensions	Ø 139 x 18 mm
Weight	0.1 kg



Large Niche Adapter

The Large Niche Adapter LLNA is designed for installation of the METEOR series of underwater pool lights into the standard large pool niches. The stainless steel shaped cover together with stainless steel screws enable reliable and esthetical installation.

Features

- For using with METEOR series
- Electropolished Stainless Steel Cover
- Stainless Steel Screws
- Simple Installation

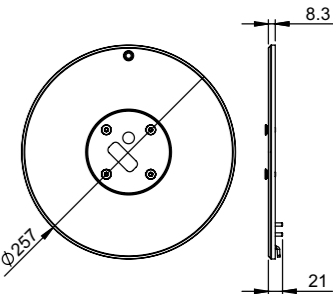


Installation of METEOR series into the standard Large Niche.

Large Niche Adapter LLNA0640

For METEOR LSR0640 series.

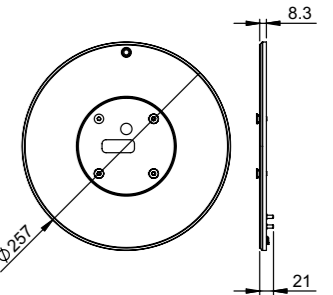
Material	Stainless steel (SAE316L)
Dimensions	Ø 257 x 21 mm
Weight	0.5kg



Large Niche Adapter LLNA1280

For METEOR LSR1280 series.

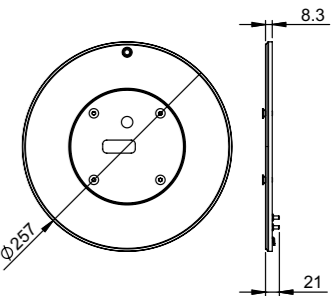
Material	Stainless steel (SAE316L)
Dimensions	Ø 257 x 21 mm
Weight	0.5kg



Large Niche Adapter LLNA36240

For METEOR LSR36240 series.

Material	Stainless steel (SAE316L)
Dimensions	Ø 257 x 21 mm
Weight	0.5kg



Small Niche Adapter

The Small Niche Adapter LSNA is designed for installation of the METEOR series of underwater pool lights into the standard small pool niches. The stainless steel shaped cover together with stainless steel screws enable reliable and esthetical installation.

Features

- For using with METEOR series
- Electropolished Stainless Steel Cover
- Stainless Steel Screws
- Simple Installation

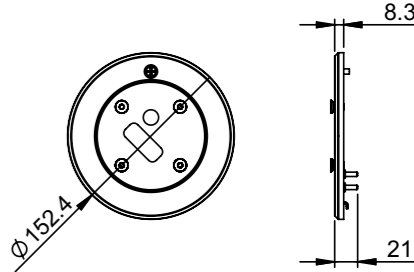


Installation of METEOR series into the standard Small Niche.

Small Niche Adapter LSNA0640

For METEOR LSR0640 series.

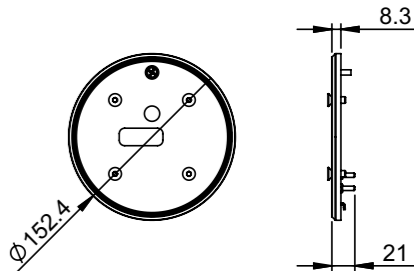
Material	Stainless steel (SAE316L)
Dimensions	Ø153 x 21 mm
Weight	0.3 kg



Small Niche Adapter LSNA1280

For METEOR LSR1280 series.

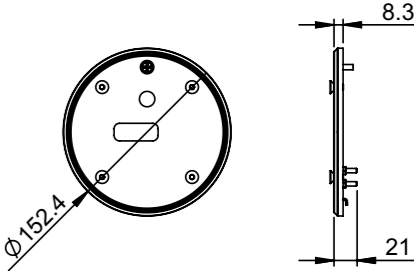
Material	Stainless steel (SAE316L)
Dimensions	Ø153 x 21 mm
Weight	0.3 kg



Small Niche Adapter LSNA36240

For METEOR LSR36240 series.

Material	Stainless steel (SAE316L)
Dimensions	Ø153 x 21 mm
Weight	0.3 kg



Concrete Pool Niche

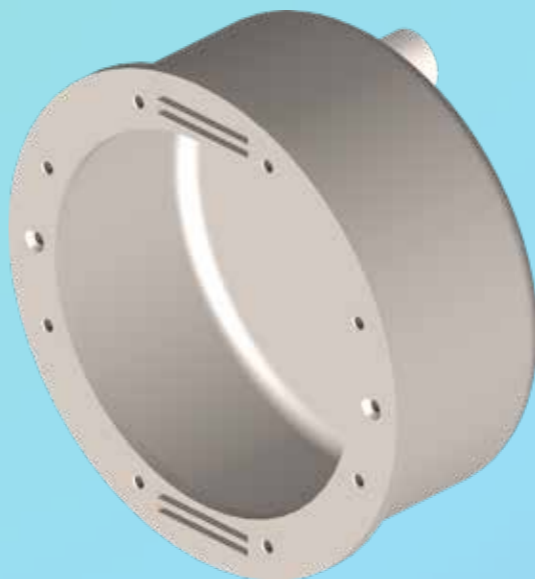
Installation of METEOR XP lights to stainless-steel or concrete pools with ceramic tile finish.

Features

- For using with METEOR XP series
- Electropolished Stainless-Steel Body



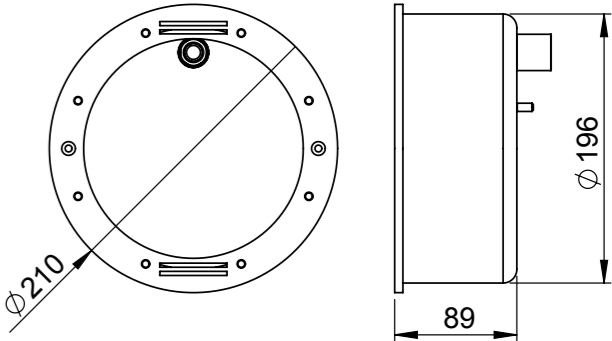
Installation of METEOR XP series to concrete pools with ceramic tiles finish.



Concrete Pool Niche LCPNXP32

For METEOR XP series.

Material	Stainless-steel (SAE316L)
Dimensions	Ø 210 x 89 mm
Weight	2.0 kg

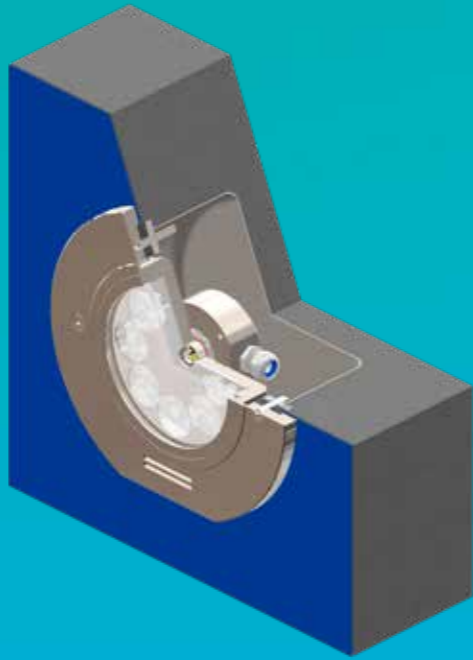


Liner Pool Niche

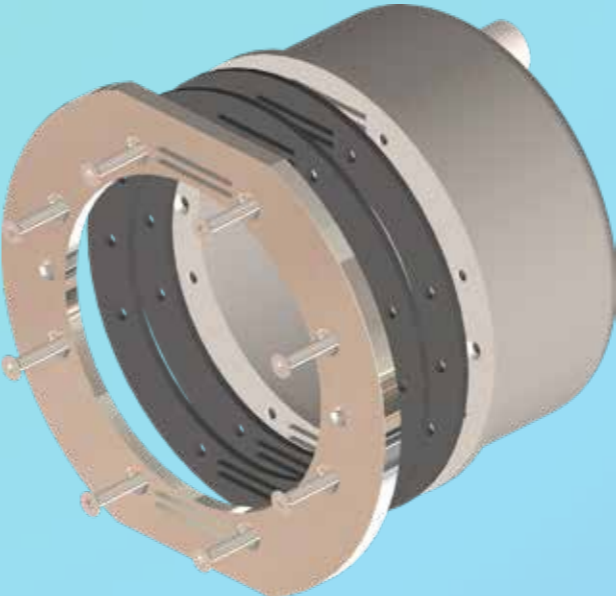
Installation of METEOR XP lights to liner/concrete pools.

Features

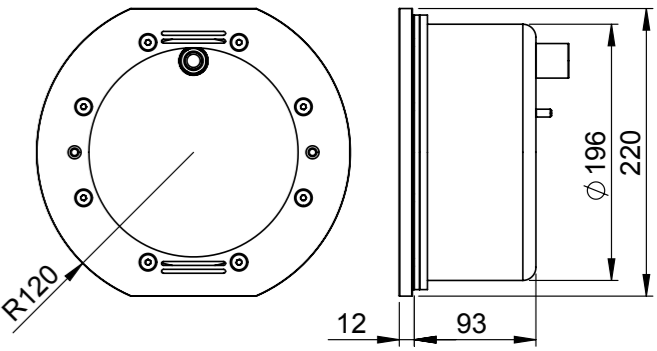
- For using with METEOR XP series
- Electropolished Stainless-Steel Body
- Electropolished Stainless-Steel Flange and Screws
- Elastomer Gaskets



Installation of METEOR XP series to liner/concrete pools.



Liner Pool Niche LLPNXP32
For METEOR XP series.
Material Stainless-steel (SAE316L)
Dimensions Ø 240 x 220 x 105 mm
Weight 3.7 kg

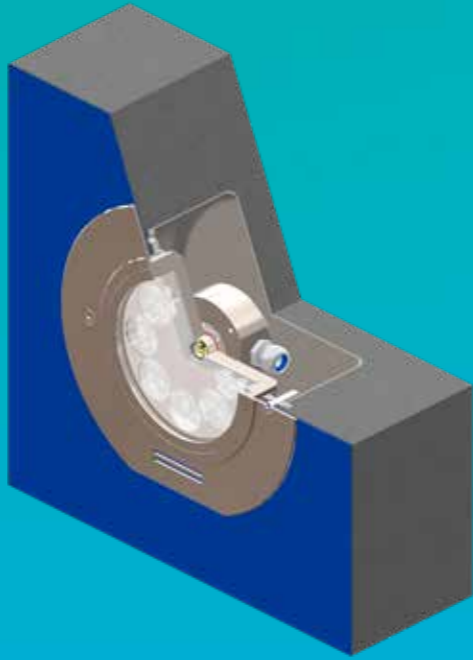


Liner Pool Niche

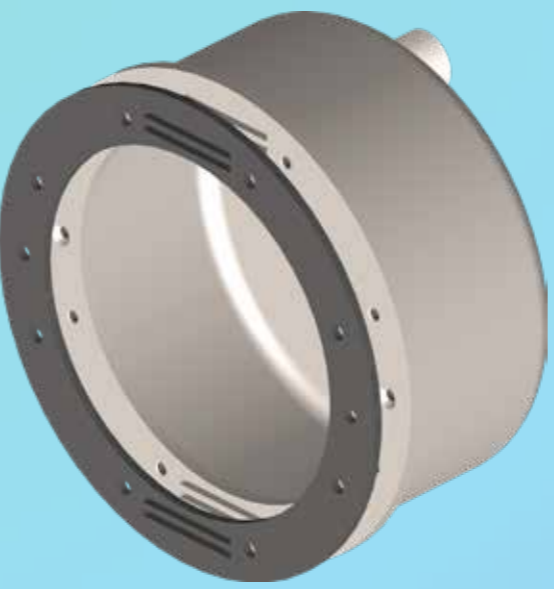
Installation of METEOR XP lights to liner/concrete pools.

Features

- For using with METEOR XP series
- Electropolished Stainless-Steel Body
- Elastomer Gasket



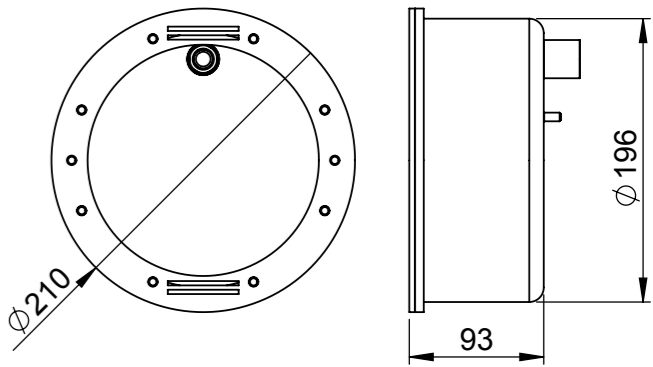
Installation of METEOR XP series to liner/concrete pools.



Liner Pool Niche LLGNXP32

For METEOR XP series.

Material	Stainless-steel (SAE316L)
Dimensions	Ø 210 x 93 mm
Weight	2.1 kg



Synchronization Unit

Synchronization of color of lighting for complete group of multi-color lights when automatical changing of color of lighting through the complete rainbow spectrum is selected and controlled by using optional momentary switch.

Features

- 8 Synchronization Outputs
- Wide Range Power Supply
- Low Power Consumption
- Polarity Protection
- Transient Protection
- Short Circuit Output Protection
- Simple Installation

PWM Dimmer

Dimming of single-color lights or group of lights by using optional momentary switch.Built-in ASTEL protocol to control single-color lights or group of lights by using optional DMX512 interface LXU01. MXU03.

Features

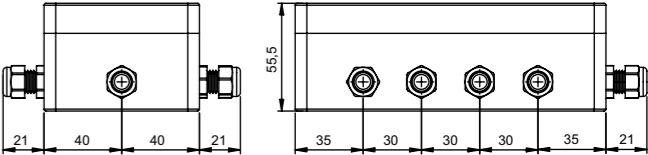
- 3 Control Outputs
- Adjustable PWM Frequency
- Wide Range Power Supply
- Low Power Consumption
- Polarity Protection
- Transient Protection
- Short Circuit Output Protection
- Simple Installation



Synchronization Unit LSU08

For multi-color RGB METEOR series.

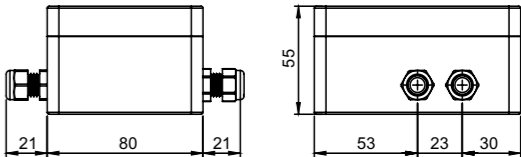
Input voltage	12-24 Vdc
Consumption	max. 10 mAdc
Operating temperature	-10°C - +50°C
Casing	ABS
Protection	IP 65
Dimensions	max. 181 x 122 x55.5 mm
Weight	0.3 kg



PWM Dimmer LDU13

For single-color METEOR series.

Input voltage	12-24 Vdc
Consumption	max. 10 mAdc
ASTEL protocol default address	1
Operating temperature	-10°C - +50°C
Casing	ABS
Protection	IP 65
Dimensions	max. 106 x 122 x 55.5 mm
Weight	0.2 kg



DMX512 Interface

DMX512 to ASTEL protocol multi-light converter to control single-color or multi-color light or one group of lights with built-in ASTEL protocol.

Features

- 1 Control Output
- DIP-switch Programmable
- Multi - Speed Mode
- Wide Range Power Supply
- Low Power Consumption
- Polarity Protection
- Transient Protection
- Short Circuit Output Protection
- Simple Installation

Converter Interface LCI41

The LCI41 is J, P, H series light control, PWM light control and analog light control converter to ASTEL protocol with 1 output to control a group of RGB/RGBW multi-color lights with built-in ASTEL protocol.

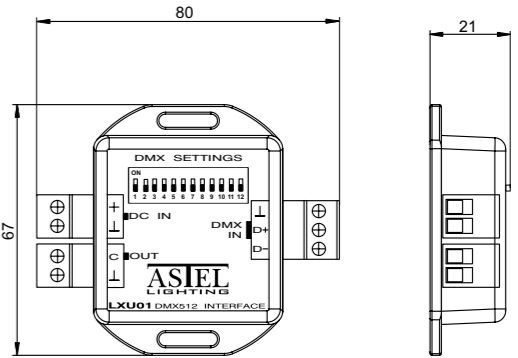
Features

- 1 Control Output
- Astel protocol
- DIP-switch Programmable
- J, P, H series light control compatible
- Opto-isolated interface
- PWM light control
- Analog light control
- Common cathode " + " interface
- Common anode " - " interface
- Wide Range Power Supply
- Low Power Consumption
- Polarity Protection
- Transient Protection
- Short Circuit Output Protection
- Simple Installation



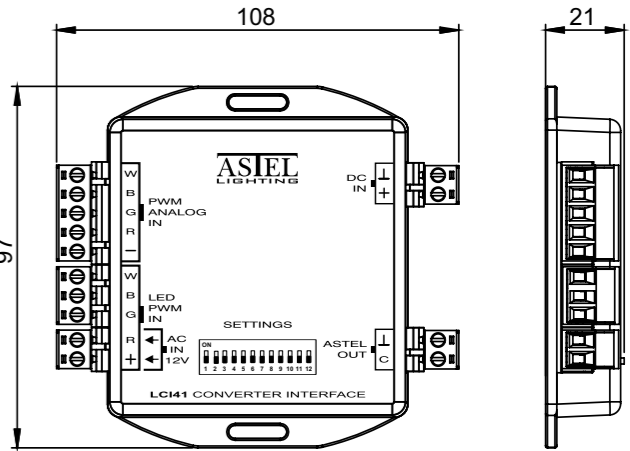
DMX512 Interface LXU01

Input voltage	12-24 Vdc
Consumption	max. 50 mAdc
Operating temperature	-10°C - +50°C
Casing	ABS
Dimensions	max. 67 x 80 x 21 mm
Weight	0.1 kg



Converter Interface LCI41

Input voltage	12 – 24 Vdc
Consumption	max. 100 mAdc
Operating temperature	-10°C – +50°C
Casing	ABS
Dimensions	max. 108x96x21mm
Weight	0.1 kg





Simply
the
brightest.

Astel Lighting is registered trademark of ASTEL d.o.o..

All other trademarks not owned by ASTEL d.o.o. are the property of their respective owners.

Due to continuous product improvement all specifications and design are subject to change without notice.

© 2026 ASTEL d.o.o.



ASTEL d.o.o.
Dutovlje 138
6221 Dutovlje
Slovenia

www.astel-lighting.com